

## DACT1 Antibody

Catalog No: #47013

Orders: [order@signalwayantibody.com](mailto:order@signalwayantibody.com)Support: [tech@signalwayantibody.com](mailto:tech@signalwayantibody.com)

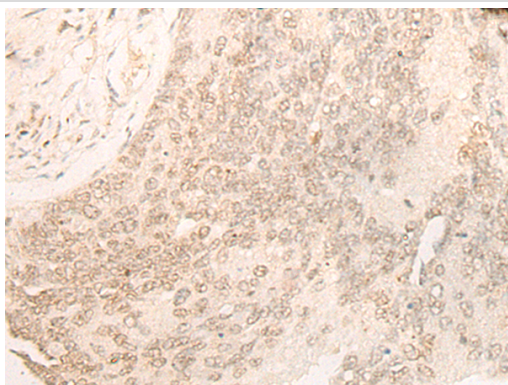
## Description

Product Name	DACT1 Antibody
Host Species	Rabbit
Clonality	Polyclonal
Purification	Antigen affinity purification
Applications	IHC
Species Reactivity	Hu
Specificity	The antibody detects endogenous levels of total DACT1 protein.
Immunogen Type	peptide
Immunogen Description	Synthetic peptide of human DACT1
Target Name	DACT1
Other Names	DPR1; FRODO; HDPR1; DAPPER; THYEX3; DAPPER1
Accession No.	Swiss-Prot#:Q9NYF0 NCBI Gene ID:51339Gene Accssion:NP_057735
Uniprot	Q9NYF0
GeneID	51339;
Concentration	0.6mg/ml
Formulation	Rabbit IgG in pH7.4 PBS, 0.05% NaN <sub>3</sub> , 40% Glycerol.
Storage	Store at -20C

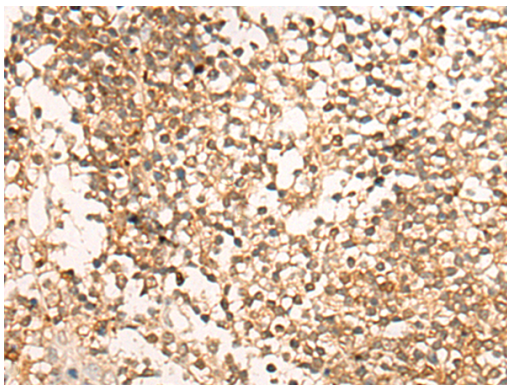
## Application Details

Immunofluorescence:1: 20-100

## Images



The image is immunohistochemistry of paraffin-embedded Human colorectal cancer tissue using 47013(DACT1 Antibody) at dilution 1/20. (Original magnification: ?00)



The image is immunohistochemistry of paraffin-embedded Human tonsil tissue using 47013(DACT1 Antibody) at dilution 1/20. (Original magnification: 200x)

## Background

The protein encoded by this gene belongs to the dapper family, characterized by the presence of PDZ-binding motif at the C-terminus. It interacts with, and positively regulates dishevelled-mediated signaling pathways during development. Depletion of this mRNA from xenopus embryos resulted in loss of notochord and head structures, and mice lacking this gene died shortly after birth from severe posterior malformations. Alternatively spliced transcript variants have been found for this gene.

Note: This product is for in vitro research use only