

## DBP Antibody

Catalog No: #47020

Orders: [order@signalwayantibody.com](mailto:order@signalwayantibody.com)Support: [tech@signalwayantibody.com](mailto:tech@signalwayantibody.com)

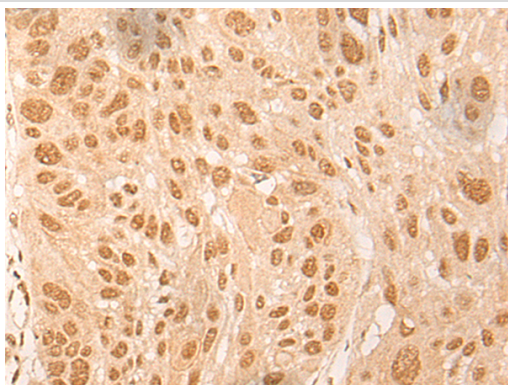
## Description

Product Name	DBP Antibody
Host Species	Rabbit
Clonality	Polyclonal
Purification	Antigen affinity purification
Applications	IHC
Species Reactivity	Hu
Specificity	The antibody detects endogenous levels of total DBP protein.
Immunogen Type	peptide
Immunogen Description	Synthetic peptide of human DBP
Target Name	DBP
Other Names	DABP
Accession No.	Swiss-Prot#:Q10586 NCBI Gene ID:1628Gene Accssion:NP_001343
Uniprot	Q10586
GeneID	1628;
Concentration	0.8mg/ml
Formulation	Rabbit IgG in pH7.4 PBS, 0.05% NaN <sub>3</sub> , 40% Glycerol.
Storage	Store at -20C

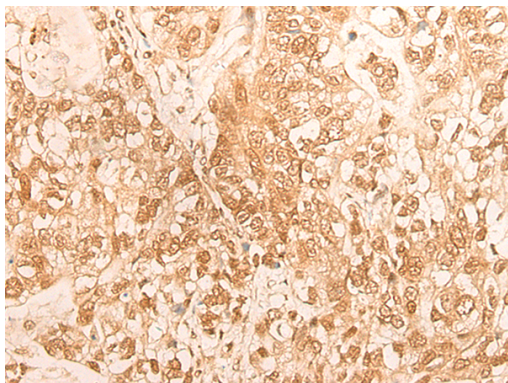
## Application Details

Immunofluorescence:1: 20-100

## Images



The image is immunohistochemistry of paraffin-embedded Human esophagus cancer tissue using 47020(DBP Antibody) at dilution 1/25. (Original magnification: ?00)



The image is immunohistochemistry of paraffin-embedded Human gastric cancer tissue using 47020(DBP Antibody) at dilution 1/25. (Original magnification: 200)

## Background

The protein encoded by this gene is a member of the PAR bZIP transcription factor family and binds to specific sequences in the promoters of several genes, such as albumin, CYP2A4, and CYP2A5. The encoded protein can bind DNA as a homo- or heterodimer and is involved in the regulation of some circadian rhythm genes.

Note: This product is for in vitro research use only