

## DBX2 Antibody

Catalog No: #47023

Orders: [order@signalwayantibody.com](mailto:order@signalwayantibody.com)Support: [tech@signalwayantibody.com](mailto:tech@signalwayantibody.com)

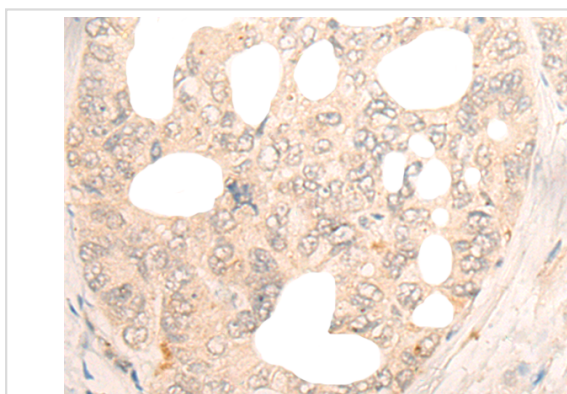
## Description

Product Name	DBX2 Antibody
Host Species	Rabbit
Clonality	Polyclonal
Purification	Antigen affinity purification
Applications	IHC
Species Reactivity	Hu
Specificity	The antibody detects endogenous levels of total DBX2 protein.
Immunogen Type	peptide
Immunogen Description	Synthetic peptide of human DBX2
Target Name	DBX2
Accession No.	Swiss-Prot#:Q6ZNG2 NCBI Gene ID:440097Gene Accssion:NP_001004329
Uniprot	Q6ZNG2
GeneID	440097;
Concentration	0.5mg/ml
Formulation	Rabbit IgG in pH7.4 PBS, 0.05% NaN <sub>3</sub> , 40% Glycerol.
Storage	Store at -20C

## Application Details

Immunofluorescence: 1: 20-100

## Images



The image is immunohistochemistry of paraffin-embedded Human gastric cancer tissue using 47023(DBX2 Antibody) at dilution 1/20. (Original magnification: ?00)

## Background

DBX2 is a member of the developing brain homeobox (DBX) protein family, but while the related protein DBX1 is expressed in various regions of the developing brain, DBX2 shows a more restricted pattern of expression in the brain, and is also expressed in some mesenchymal cells such as limb buds and tooth germs. It is thought that DBX1 and DBX2 promote the development of a subset of interneurons, some of which help mediate left-right coordination of locomotor activity. In *Xenopus*, DBX2 is involved in primary neurogenesis and early neural plate patterning, and is thought to act as a cross-repressive partner of NKX6-2 in the patterning of the ventral neural tube.

---

Note: This product is for in vitro research use only