

## DENND1B Antibody

Catalog No: #47045

Orders: [order@signalwayantibody.com](mailto:order@signalwayantibody.com)Support: [tech@signalwayantibody.com](mailto:tech@signalwayantibody.com)

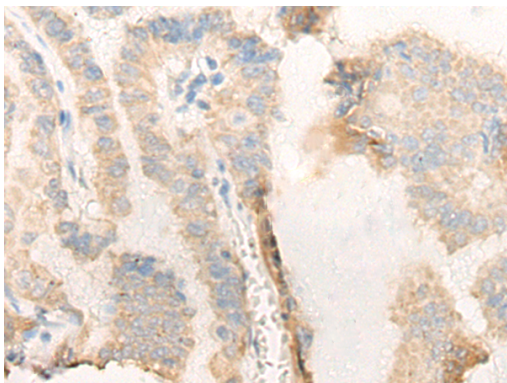
## Description

Product Name	DENND1B Antibody
Host Species	Rabbit
Clonality	Polyclonal
Purification	Antigen affinity purification
Applications	IHC
Species Reactivity	Hu
Specificity	The antibody detects endogenous levels of total DENND1B protein.
Immunogen Type	protein
Immunogen Description	Fusion protein of human DENND1B
Target Name	DENND1B
Other Names	FAM31B; C1ORF18; C1orf218
Accession No.	Swiss-Prot#:Q6P3S1NCBI Gene ID:163486Gene Accssion:BC022561
Uniprot	Q6P3S1
GeneID	163486;
Concentration	0.7mg/ml
Formulation	Rabbit IgG in pH7.4 PBS, 0.05% NaN <sub>3</sub> , 40% Glycerol.
Storage	Store at -20C

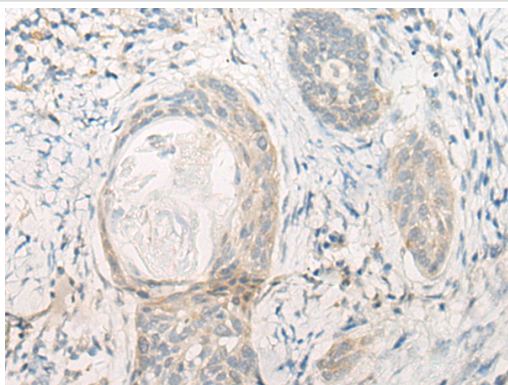
## Application Details

Immunofluorescence:1: 20-100

## Images



The image is immunohistochemistry of paraffin-embedded Human thyroid cancer tissue using 47045(DENND1B Antibody) at dilution 1/20. (Original magnification: ?00)



The image is immunohistochemistry of paraffin-embedded Human esophagus cancer tissue using 47045(DENND1B Antibody) at dilution 1/20. (Original magnification: ?00)

## Background

Clathrin (see MIM 118955)-mediated endocytosis is a major mechanism for internalization of proteins and lipids. Members of the connectin family, such as DENND1B, function as guanine nucleotide exchange factors (GEFs) for the early endosomal small GTPase RAB35 (MIM 604199) and bind to clathrin and clathrin adaptor protein-2 (AP2; see MIM 601024). Thus, connectins link RAB35 activation with the clathrin machinery (Marat and McPherson, 2010 [PubMed 20154091]).

Note: This product is for in vitro research use only