

## DHRS1 Antibody

Catalog No: #47051

Orders: [order@signalwayantibody.com](mailto:order@signalwayantibody.com)Support: [tech@signalwayantibody.com](mailto:tech@signalwayantibody.com)

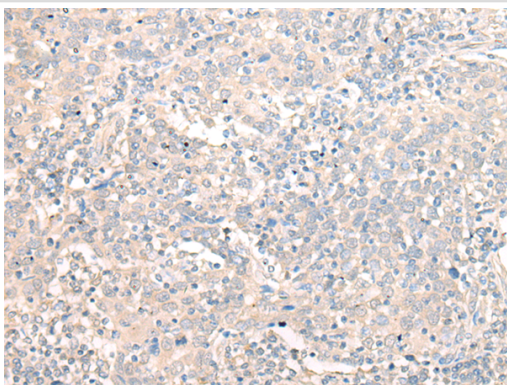
## Description

Product Name	DHRS1 Antibody
Host Species	Rabbit
Clonality	Polyclonal
Purification	Antigen affinity purification
Applications	WB, IHC
Species Reactivity	Hu
Specificity	The antibody detects endogenous levels of total DHRS1 protein.
Immunogen Type	protein
Immunogen Description	Fusion protein of human DHRS1
Target Name	DHRS1
Other Names	SDR19C1
Accession No.	Swiss-Prot#:Q96LJ7NCBI Gene ID:115817Gene Accssion:BC015943
Uniprot	Q96LJ7
GeneID	115817;
Calculated MW	34 kDa
Concentration	0.7mg/ml
Formulation	Rabbit IgG in pH7.4 PBS, 0.05% NaN <sub>3</sub> , 40% Glycerol.
Storage	Store at -20C

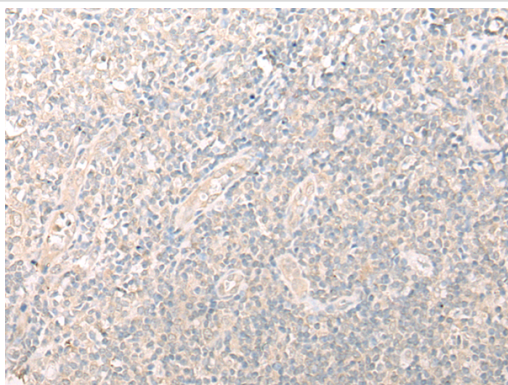
## Application Details

Western blotting:1:500-2000Immunofluorescence:1: 25-100

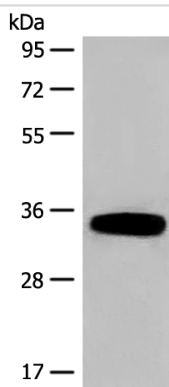
## Images



The image is immunohistochemistry of paraffin-embedded Human cervical cancer tissue using 47051(DHRS1 Antibody) at dilution 1/20. (Original magnification: ?00)



The image is immunohistochemistry of paraffin-embedded Human tonsil tissue using 47051(DHRS1 Antibody) at dilution 1/20. (Original magnification: ?00)



Gel: 8%SDS-PAGE  
 Lysate: 40 µg, Lane: Human fetal liver tissue lysate  
 Primary antibody:DHRS1 Antibody at dilution 1/400  
 Secondary antibody: Goat anti rabbit IgG at 1/8000 dilution  
 Exposure time: 1 minute

## Background

This gene encodes a member of the short-chain dehydrogenases/reductases (SDR) family. The encoded enzyme contains a conserved catalytic domain and likely functions as an oxidoreductase. Multiple alternatively spliced variants, encoding the same protein, have been identified.?

Note: This product is for in vitro research use only