

WDR36 Antibody

Catalog No: #40299

Orders: order@signalwayantibody.comSupport: tech@signalwayantibody.com

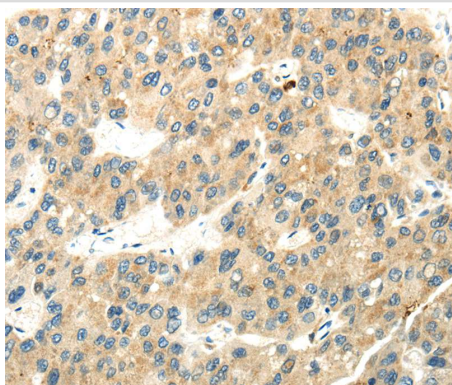
Description

Product Name	WDR36 Antibody
Host Species	Rabbit
Clonality	Polyclonal
Purification	Antigen affinity purification.
Applications	IHC
Species Reactivity	Hu
Specificity	The antibody detects endogenous levels of total WDR36 protein.
Immunogen Type	Peptide
Immunogen Description	Synthetic peptide of human WD repeat domain 36
Target Name	WDR36
Other Names	GLC1G; UTP21; TAWDRP; TA-WDRP
Accession No.	Swiss-Prot:Q8NI36 Gene Accssion:NP_644810
Uniprot	Q8NI36
GeneID	134430;
SDS-PAGE MW	105KD
Concentration	2.2mg/ml
Formulation	Rabbit IgG in pH7.4 PBS, 0.05% NaN ₃ , 40% Glycerol.
Storage	Store at -20°C

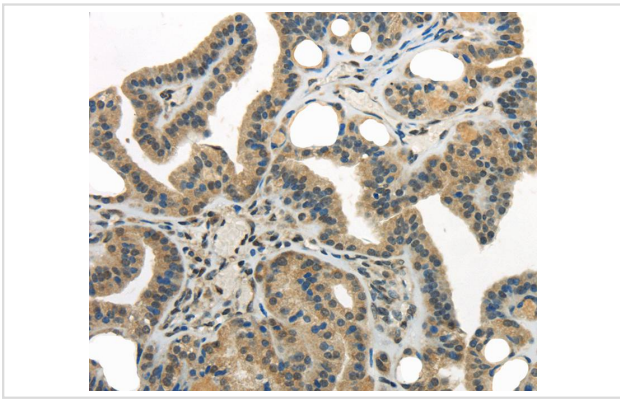
Application Details

Immunohistochemistry:1:25-1:100

Images



Immunohistochemical analysis of paraffin-embedded Human liver cancer tissue using #40299 at dilution 1/35.



Immunohistochemical analysis of paraffin-embedded Human thyroid cancer tissue using #40299 at dilution 1/35.

Background

This gene encodes a member of the WD repeat protein family. WD repeats are minimally conserved regions of approximately 40 amino acids typically bracketed by gly-his and trp-aspartic acid (GH-WD), which may facilitate formation of heterotrimeric or multiprotein complexes. Members of this family are involved in a variety of cellular processes, including cell cycle progression, signal transduction, apoptosis, and gene regulation. Mutations in this gene have been associated with adult-onset primary open-angle glaucoma (POAG).?

Note: This product is for in vitro research use only