

## DMGDH Antibody

Catalog No: #47065

Orders: [order@signalwayantibody.com](mailto:order@signalwayantibody.com)Support: [tech@signalwayantibody.com](mailto:tech@signalwayantibody.com)

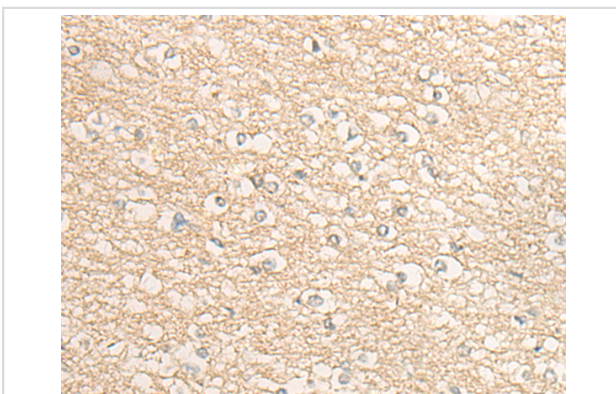
## Description

Product Name	DMGDH Antibody
Host Species	Rabbit
Clonality	Polyclonal
Purification	Antigen affinity purification
Applications	IHC
Species Reactivity	Hu
Specificity	The antibody detects endogenous levels of total DMGDH protein.
Immunogen Type	peptide
Immunogen Description	Synthetic peptide of human DMGDH
Target Name	DMGDH
Other Names	DMGDHD; ME2GLYDH
Accession No.	Swiss-Prot#:Q9UI17 NCBI Gene ID:29958 Gene Accssion:NP_037523
Uniprot	Q9UI17
GeneID	29958;
Concentration	1.1mg/ml
Formulation	Rabbit IgG in pH7.4 PBS, 0.05% NaN <sub>3</sub> , 40% Glycerol.
Storage	Store at -20C

## Application Details

Immunofluorescence: 1: 25-100

## Images



The image is immunohistochemistry of paraffin-embedded Human brain tissue using 47065(DMGDH Antibody) at dilution 1/30. (Original magnification: ?00)

## Background

This gene encodes an enzyme involved in the catabolism of choline, catalyzing the oxidative demethylation of dimethylglycine to form sarcosine. The enzyme is found as a monomer in the mitochondrial matrix, and uses flavin adenine dinucleotide and folate as cofactors. Mutation in this gene causes dimethylglycine dehydrogenase deficiency, characterized by a fishlike body odor, chronic muscle fatigue, and elevated levels of the muscle form of creatine kinase in serum. Alternative splicing results in multiple transcript variants.

---

Note: This product is for in vitro research use only