

## DR1 Antibody

Catalog No: #47078

Orders: [order@signalwayantibody.com](mailto:order@signalwayantibody.com)Support: [tech@signalwayantibody.com](mailto:tech@signalwayantibody.com)

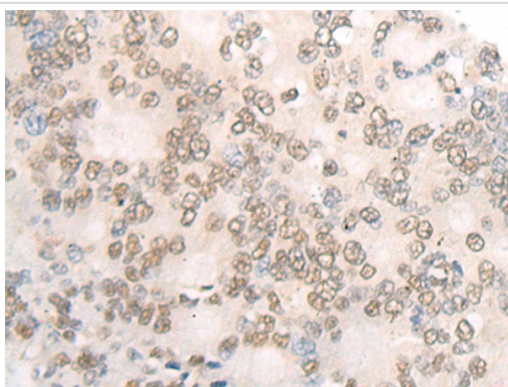
## Description

Product Name	DR1 Antibody
Host Species	Rabbit
Clonality	Polyclonal
Purification	Antigen affinity purification
Applications	IHC
Species Reactivity	Hu
Specificity	The antibody detects endogenous levels of total DR1 protein.
Immunogen Type	peptide
Immunogen Description	Synthetic peptide of human DR1
Target Name	DR1
Other Names	NC2; NC2B; NC2-BETA
Accession No.	Swiss-Prot#:Q01658 NCBI Gene ID:1810Gene Accssion:NP_001929
Uniprot	Q01658
GeneID	1810;
Concentration	1mg/ml
Formulation	Rabbit IgG in pH7.4 PBS, 0.05% NaN <sub>3</sub> , 40% Glycerol.
Storage	Store at -20C

## Application Details

Immunofluorescence:1: 20-100

## Images



The image is immunohistochemistry of paraffin-embedded Human colorectal cancer tissue using 47078(DR1 Antibody) at dilution 1/25. (Original magnification: ?00)

## Background

This gene encodes a TBP- (TATA box-binding protein) associated phosphoprotein that represses both basal and activated levels of transcription. The encoded protein is phosphorylated in vivo and this phosphorylation affects its interaction with TBP. This protein contains a histone fold motif at the amino terminus, a TBP-binding domain, and a glutamine- and alanine-rich region. The binding of DR1 repressor complexes to TBP-promoter complexes may establish a mechanism in which an altered DNA conformation, together with the formation of higher order complexes, inhibits the

assembly of the preinitiation complex and controls the rate of RNA polymerase II transcription.?

---

Note: This product is for in vitro research use only