

## DSC3 Antibody

Catalog No: #47080

Orders: [order@signalwayantibody.com](mailto:order@signalwayantibody.com)Support: [tech@signalwayantibody.com](mailto:tech@signalwayantibody.com)

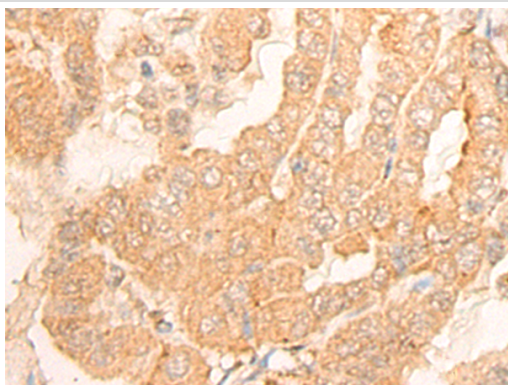
## Description

Product Name	DSC3 Antibody
Host Species	Rabbit
Clonality	Polyclonal
Purification	Antigen affinity purification
Applications	IHC
Species Reactivity	Hu
Specificity	The antibody detects endogenous levels of total DSC3 protein.
Immunogen Type	peptide
Immunogen Description	Synthetic peptide of human DSC3
Target Name	DSC3
Other Names	DSC; DSC1; DSC2; DSC4; CDHF3; HT-CP
Accession No.	Swiss-Prot#:Q14574 NCBI Gene ID:1825Gene Accssion:NP_001932
Uniprot	Q14574
GeneID	1825;
Concentration	0.8mg/ml
Formulation	Rabbit IgG in pH7.4 PBS, 0.05% NaN <sub>3</sub> , 40% Glycerol.
Storage	Store at -20C

## Application Details

Immunofluorescence:1: 25-100

## Images



The image is immunohistochemistry of paraffin-embedded Human thyroid cancer tissue using 47080(DSC3 Antibody) at dilution 1/20. (Original magnification: ?00)

## Background

The protein encoded by this gene is a calcium-dependent glycoprotein that is a member of the desmocollin subfamily of the cadherin superfamily. These desmosomal family members, along with the desmogleins, are found primarily in epithelial cells where they constitute the adhesive proteins of the desmosome cell-cell junction and are required for cell adhesion and desmosome formation. The desmosomal family members are arranged in two clusters on chromosome 18, occupying less than 650 kb combined. Mutations in this gene are a cause of hypotrichosis and recurrent skin vesicles

disorder. The protein can act as an autoantigen in pemphigus diseases, and it is also considered to be a biomarker for some cancers. Alternative splicing of this gene results in multiple transcript variants.

---

Note: This product is for in vitro research use only