

## ELL2 Antibody

Catalog No: #47102

Orders: [order@signalwayantibody.com](mailto:order@signalwayantibody.com)Support: [tech@signalwayantibody.com](mailto:tech@signalwayantibody.com)

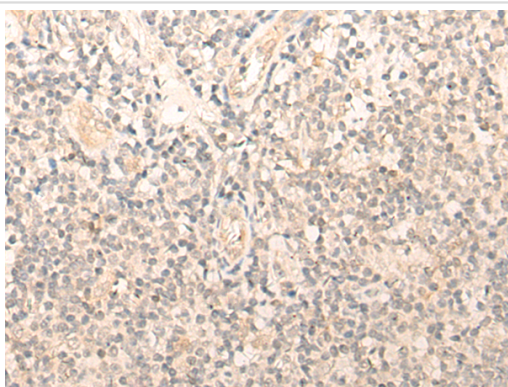
## Description

Product Name	ELL2 Antibody
Host Species	Rabbit
Clonality	Polyclonal
Purification	Antigen affinity purification
Applications	IHC
Species Reactivity	Hu
Specificity	The antibody detects endogenous levels of total ELL2 protein.
Immunogen Type	peptide
Immunogen Description	Synthetic peptide of human ELL2
Target Name	ELL2
Accession No.	Swiss-Prot#:O00472 NCBI Gene ID:22936Gene Accssion:NP_036213
Uniprot	O00472
GeneID	22936;
Concentration	1.1mg/ml
Formulation	Rabbit IgG in pH7.4 PBS, 0.05% NaN <sub>3</sub> , 40% Glycerol.
Storage	Store at -20C

## Application Details

Immunofluorescence: 1: 20-100

## Images



The image is immunohistochemistry of paraffin-embedded Human tonsil tissue using 47102(ELL2 Antibody) at dilution 1/30. (Original magnification: ?00)

## Background

ELL2 (RNA polymerase II elongation factor ELL2) is a 640 amino acid nuclear protein that belongs to the ELL/occludin family. This family is defined by a highly conserved domain of approximately 100 amino residues found within all eukaryotic occludin proteins and the RNA polymerase II elongation factor ELL. These elongation factors activate elongation by suppressing transient pausing by polymerase at many sites along the DNA and govern its interaction with RNA polymerase II and the ternary elongation complex. ELL2 may also contain a novel type of RNA polymerase II interaction domain that is capable of negatively regulating polymerase activity in promoter-specific transcription initiation in vitro.

---

Note: This product is for in vitro research use only