

## IL-20 Antibody

Catalog No: #40305

Orders: [order@signalwayantibody.com](mailto:order@signalwayantibody.com)Support: [tech@signalwayantibody.com](mailto:tech@signalwayantibody.com)

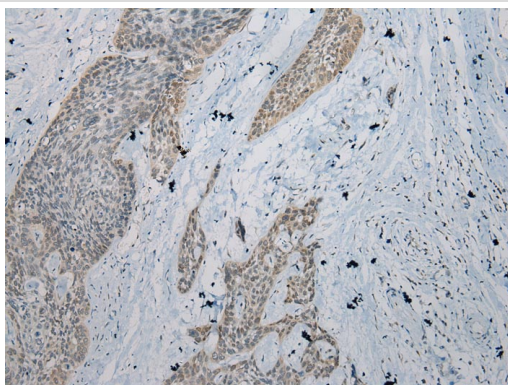
## Description

Product Name	IL-20 Antibody
Host Species	Rabbit
Clonality	Polyclonal
Purification	Antigen affinity purification.
Applications	IHC
Species Reactivity	Hu
Specificity	The antibody detects endogenous levels of total IL-20 protein.
Immunogen Type	Peptide
Immunogen Description	Synthetic peptide of human interleukin 20
Target Name	IL-20
Other Names	IL-20; IL10D; ZCYTO10
Accession No.	Swiss-Prot:Q9NYY1Gene Accssion:NP_061194
Uniprot	Q9NYY1
GeneID	50604;
Concentration	1.3mg/ml
Formulation	Rabbit IgG in pH7.4 PBS, 0.05% NaN <sub>3</sub> , 40% Glycerol.
Storage	Store at -20°C

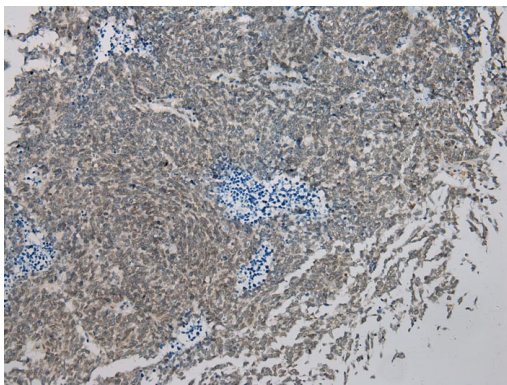
## Application Details

Immunohistochemistry: 1:100-1:200

## Images



Immunohistochemical analysis of paraffin-embedded Human Esophagus cancer tissue using #40305 at dilution 1/200.



Immunohistochemical analysis of paraffin-embedded Human Lung cancer tissue using #40305 at dilution 1/200.

## Background

The protein encoded by this gene is a cytokine structurally related to interleukin 10 (IL10). This cytokine has been shown to transduce its signal through signal transducer and activator of transcription 3 (STAT3) in keratinocytes. A specific receptor for this cytokine is found to be expressed in skin and upregulated dramatically in psoriatic skin, suggesting a role for this protein in epidermal function and psoriasis.

Note: This product is for in vitro research use only