

GCDH Antibody

Catalog No: #47125

Orders: order@signalwayantibody.comSupport: tech@signalwayantibody.com

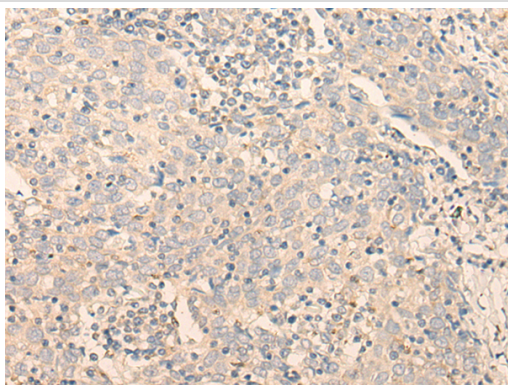
Description

Product Name	GCDH Antibody
Host Species	Rabbit
Clonality	Polyclonal
Purification	Antigen affinity purification
Applications	IHC
Species Reactivity	Hu
Specificity	The antibody detects endogenous levels of total GCDH protein.
Immunogen Type	protein
Immunogen Description	Fusion protein of human GCDH
Target Name	GCDH
Other Names	GCD; ACAD5
Accession No.	Swiss-Prot#:Q92947NCBI Gene ID:2639Gene Accssion:BC002579
Uniprot	Q92947
GeneID	2639;
Concentration	1mg/ml
Formulation	Rabbit IgG in pH7.4 PBS, 0.05% NaN ₃ , 40% Glycerol.
Storage	Store at -20C

Application Details

Immunofluorescence:1: 20-100

Images



The image is immunohistochemistry of paraffin-embedded Human cervical cancer tissue using 47125(GCDH Antibody) at dilution 1/30. (Original magnification: ?00)

Background

The protein encoded by this gene belongs to the acyl-CoA dehydrogenase family. It catalyzes the oxidative decarboxylation of glutaryl-CoA to crotonyl-CoA and CO(2) in the degradative pathway of L-lysine, L-hydroxylysine, and L-tryptophan metabolism. It uses electron transfer flavoprotein as its electron acceptor. The enzyme exists in the mitochondrial matrix as a homotetramer of 45-kD subunits. Mutations in this gene result in the metabolic disorder glutaric aciduria type 1, which is also known as glutaric acidemia type I. Alternative splicing of this gene results in multiple transcript

variants. A related pseudogene has been identified on chromosome 12.

Note: This product is for in vitro research use only