

GK5 Antibody

Catalog No: #47127

Orders: order@signalwayantibody.comSupport: tech@signalwayantibody.com

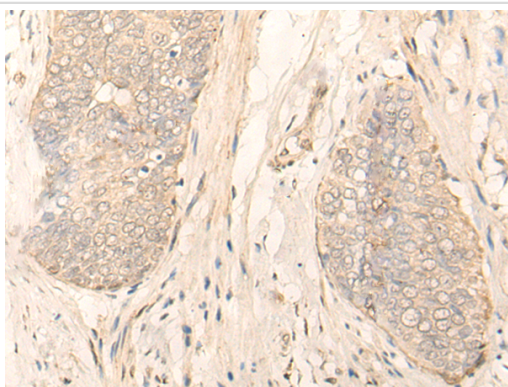
Description

| | |
|-----------------------|---|
| Product Name | GK5 Antibody |
| Host Species | Rabbit |
| Clonality | Polyclonal |
| Purification | Antigen affinity purification |
| Applications | WB, IHC |
| Species Reactivity | Hu |
| Specificity | The antibody detects endogenous levels of total GK5 protein. |
| Immunogen Type | protein |
| Immunogen Description | Full length fusion protein |
| Target Name | GK5 |
| Accession No. | Swiss-Prot#:Q6ZS86NCBI Gene ID:256356Gene Accssion:BC032470 |
| Uniprot | Q6ZS86 |
| GeneID | 256356; |
| Calculated MW | 59 kDa |
| Concentration | 1.3mg/ml |
| Formulation | Rabbit IgG in pH7.4 PBS, 0.05% NaN ₃ , 40% Glycerol. |
| Storage | Store at -20C |

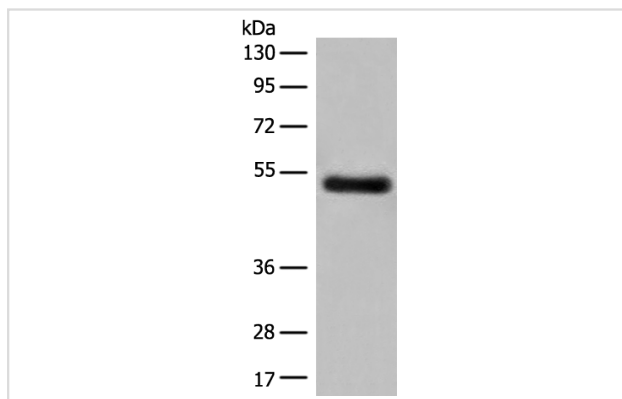
Application Details

Western blotting:1:500-2000Immunofluorescence:1: 20-100

Images



The image is immunohistochemistry of paraffin-embedded Human esophagus cancer tissue using 47127(GK5 Antibody) at dilution 1/35. (Original magnification: ?00)



Gel: 8%SDS-PAGE
Lysate: 40 µg, Lane: Human breast cancer tissue lysate
Primary antibody: GK5 Antibody at dilution 1/500
Secondary antibody: Goat anti rabbit IgG at 1/8000 dilution
Exposure time: 90 seconds

Background

GK5(Putative glycerol kinase 5) is also named as ATP:glycerol 3-phosphotransferase 5 and belongs to the FGGY kinase family. It is involved in Glycerol metabolism and catalyzes the phosphorylation of glycerol by ATP, yielding ADP and glycerol-3-phosphate. It has 3 isoforms produced by alternative splicing with the MW of 59 kDa, 34 kDa and 28 kDa.

Note: This product is for in vitro research use only