

ITM2B Antibody

Catalog No: #47141

Orders: order@signalwayantibody.comSupport: tech@signalwayantibody.com

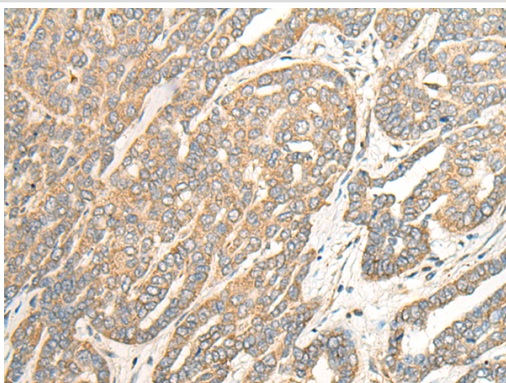
Description

Product Name	ITM2B Antibody
Host Species	Rabbit
Clonality	Polyclonal
Purification	Antigen affinity purification
Applications	WB, IHC
Species Reactivity	Hu
Specificity	The antibody detects endogenous levels of total ITM2B protein.
Immunogen Type	protein
Immunogen Description	Fusion protein of human ITM2B
Target Name	ITM2B
Other Names	BRI; FBD; ABRI; BRI2; E25B; E3-16; RDGCA; imBRI2; BRICD2B
Accession No.	Swiss-Prot#:Q9Y287NCBI Gene ID:9445Gene Accssion:BC000554
Uniprot	Q9Y287
GeneID	9445;
Calculated MW	30 kDa
Concentration	1.2mg/ml
Formulation	Rabbit IgG in pH7.4 PBS, 0.05% NaN ₃ , 40% Glycerol.
Storage	Store at -20C

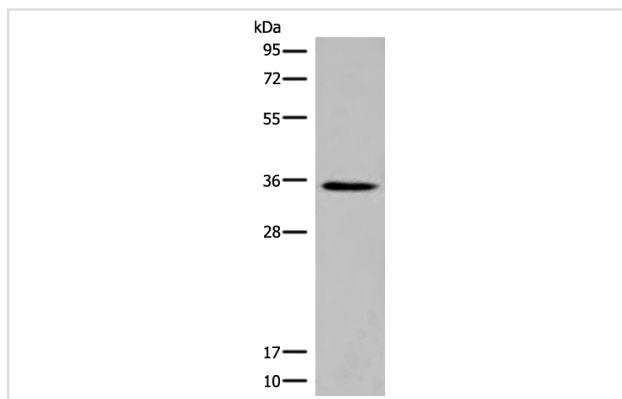
Application Details

Western blotting:1:500-2000Immunofluorescence:1: 20-100

Images



The image is immunohistochemistry of paraffin-embedded Human liver cancer tissue using 47141(ITM2B Antibody) at dilution 1/35. (Original magnification: ?00)



Gel: 12%SDS-PAGE
Lysate: 40 µg, Lane: Rat kidney tissue lysate
Primary antibody:ITM2B Antibody at dilution 1/500
Secondary antibody: Goat anti rabbit IgG at 1/8000 dilution
Exposure time: 30 seconds

Background

Amyloid precursor proteins are processed by beta-secretase and gamma-secretase to produce beta-amyloid peptides which form the characteristic plaques of Alzheimer disease. This gene encodes a transmembrane protein which is processed at the C-terminus by furin or furin-like proteases to produce a small secreted peptide which inhibits the deposition of beta-amyloid. Mutations which result in extension of the C-terminal end of the encoded protein, thereby increasing the size of the secreted peptide, are associated with two neurogenerative diseases, familial British dementia and familial Danish dementia.

Note: This product is for in vitro research use only