

## KCNH5 Antibody

Catalog No: #47144

Orders: [order@signalwayantibody.com](mailto:order@signalwayantibody.com)Support: [tech@signalwayantibody.com](mailto:tech@signalwayantibody.com)

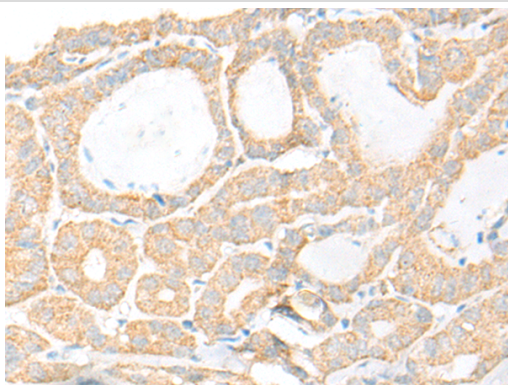
## Description

|                       |   |
|-----------------------|---|
| Product Name          | KCNH5 Antibody  |
| Host Species          | Rabbit  |
| Clonality             | Polyclonal  |
| Purification          | Antigen affinity purification                                   |
| Applications          | IHC   |
| Species Reactivity    | Hu  |
| Specificity           | The antibody detects endogenous levels of total KCNH5 protein.  |
| Immunogen Type        | peptide   |
| Immunogen Description | Synthetic peptide of human KCNH5                                |
| Target Name           | KCNH5   |
| Other Names           | EAG2; hEAG2; H-EAG2; Kv10.2                                     |
| Accession No.         | Swiss-Prot#:Q8NCM2 NCBI Gene ID:27133Gene Accssion:NP_647479    |
| Uniprot               | Q8NCM2  |
| GeneID                | 27133;  |
| Concentration         | 0.7mg/ml  |
| Formulation           | Rabbit IgG in pH7.4 PBS, 0.05% NaN <sub>3</sub> , 40% Glycerol. |
| Storage               | Store at -20C   |

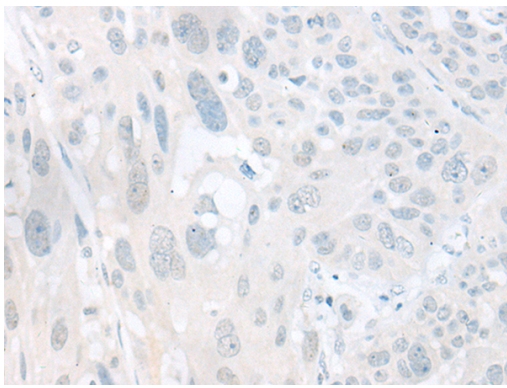
## Application Details

Immunofluorescence:1: 20-100

## Images



The image is immunohistochemistry of paraffin-embedded Human thyroid cancer tissue using 47144(KCNH5 Antibody) at dilution 1/20. (Original magnification: ?00)



The image is immunohistochemistry of paraffin-embedded Human esophagus cancer tissue using 47144(KCNH5 Antibody) at dilution 1/20. (Original magnification: ?00)

## Background

This gene encodes a member of voltage-gated potassium channels. Members of this family have diverse functions, including regulating neurotransmitter and hormone release, cardiac function, and cell volume. This protein is an outward-rectifying, noninactivating channel. Alternative splicing results in multiple transcript variants.

Note: This product is for in vitro research use only