

## MED23 Antibody

Catalog No: #47151

Orders: [order@signalwayantibody.com](mailto:order@signalwayantibody.com)Support: [tech@signalwayantibody.com](mailto:tech@signalwayantibody.com)

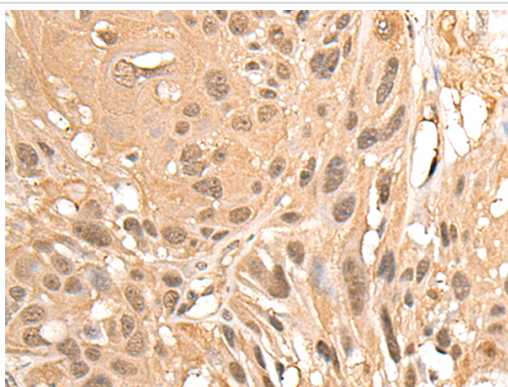
## Description

Product Name	MED23 Antibody
Host Species	Rabbit
Clonality	Polyclonal
Purification	Antigen affinity purification
Applications	IHC
Species Reactivity	Hu
Specificity	The antibody detects endogenous levels of total MED23 protein.
Immunogen Type	peptide
Immunogen Description	Synthetic peptide of human MED23
Target Name	MED23
Other Names	SUR2; CRSP3; MRT18; SUR-2; ARC130; CRSP130; CRSP133; DRIP130
Accession No.	Swiss-Prot#:Q9ULK4 NCBI Gene ID:9439Gene Accssion:NP_004821
Uniprot	Q9ULK4
GeneID	9439;
Concentration	1.2mg/ml
Formulation	Rabbit IgG in pH7.4 PBS, 0.05% NaN <sub>3</sub> , 40% Glycerol.
Storage	Store at -20C

## Application Details

Immunofluorescence:1: 20-100

## Images



The image is immunohistochemistry of paraffin-embedded Human ovarian cancer tissue using 47151(MED23 Antibody) at dilution 1/30. (Original magnification: ?00)

## Background

The activation of gene transcription is a multistep process that is triggered by factors that recognize transcriptional enhancer sites in DNA. These factors work with co-activators to direct transcriptional initiation by the RNA polymerase II apparatus. The protein encoded by this gene is a subunit of the CRSP (cofactor required for SP1 activation) complex, which, along with TFIID, is required for efficient activation by SP1. This protein is also a component of other multisubunit complexes e.g. thyroid hormone receptor-(TR-) associated proteins which interact with TR and facilitate TR function

on DNA templates in conjunction with initiation factors and cofactors. This protein also acts as a metastasis suppressor. Several alternatively spliced transcript variants encoding different isoforms have been described for this gene.

---

Note: This product is for in vitro research use only