

MR1 Antibody

Catalog No: #47157

Orders: order@signalwayantibody.comSupport: tech@signalwayantibody.com

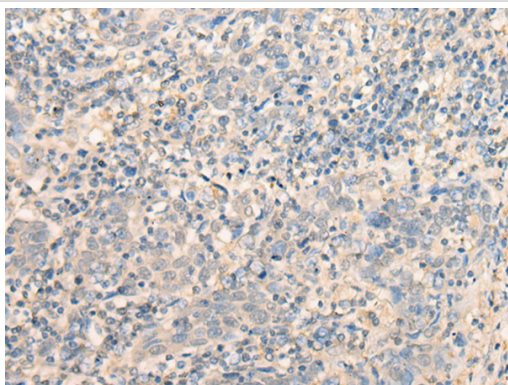
Description

Product Name	MR1 Antibody
Host Species	Rabbit
Clonality	Polyclonal
Purification	Antigen affinity purification
Applications	IHC
Species Reactivity	Hu
Specificity	The antibody detects endogenous levels of total MR1 protein.
Immunogen Type	protein
Immunogen Description	Fusion protein of human MR1
Target Name	MR1
Other Names	HLALS
Accession No.	Swiss-Prot#:Q95460NCBI Gene ID:3140Gene Accssion:BC012485
Uniprot	Q95460
GeneID	3140;
Concentration	1.3mg/ml
Formulation	Rabbit IgG in pH7.4 PBS, 0.05% NaN ₃ , 40% Glycerol.
Storage	Store at -20C

Application Details

Immunofluorescence:1: 20-100

Images



The image is immunohistochemistry of paraffin-embedded Human cervical cancer tissue using 47157(MR1 Antibody) at dilution 1/40. (Original magnification: 200)

Background

MAIT (mucosal-associated invariant T-cells) lymphocytes represent a small population of T-cells primarily found in the gut. The protein encoded by this gene is an antigen-presenting molecule that presents metabolites of microbial vitamin B to MAITs. This presentation may activate the MAITs to regulate the amounts of specific types of bacteria in the gut. Several transcript variants encoding different isoforms have been found for this gene, and a pseudogene of it has been detected about 36 kbp upstream on the same chromosome.?

Note: This product is for in vitro research use only