

MRPL1 Antibody

Catalog No: #47159

Orders: order@signalwayantibody.comSupport: tech@signalwayantibody.com

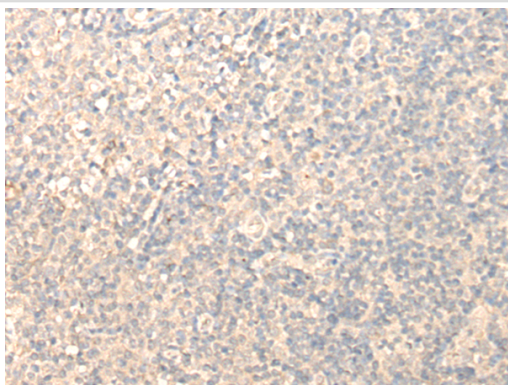
Description

Product Name	MRPL1 Antibody
Host Species	Rabbit
Clonality	Polyclonal
Purification	Antigen affinity purification
Applications	WB, IHC
Species Reactivity	Hu
Specificity	The antibody detects endogenous levels of total MRPL1 protein.
Immunogen Type	protein
Immunogen Description	Fusion protein of human MRPL1
Target Name	MRPL1
Other Names	L1MT; BM022; MRP-L1
Accession No.	Swiss-Prot#:Q9BYD6NCBI Gene ID:65008Gene Accssion:BC014356
Uniprot	Q9BYD6
GeneID	65008;
Calculated MW	37 kDa
Concentration	0.8mg/ml
Formulation	Rabbit IgG in pH7.4 PBS, 0.05% NaN ₃ , 40% Glycerol.
Storage	Store at -20C

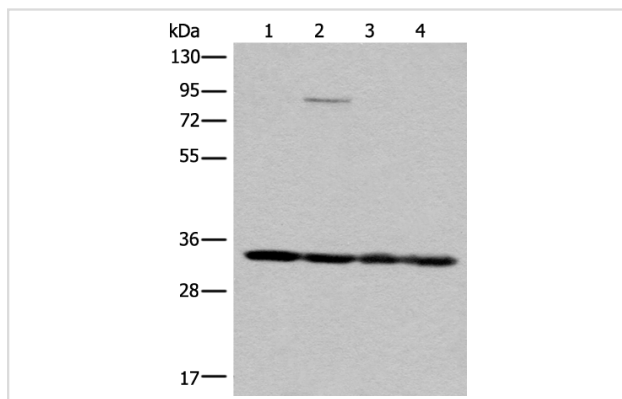
Application Details

Western blotting:1:500-2000Immunofluorescence:1: 20-100

Images



The image is immunohistochemistry of paraffin-embedded Human tonsil tissue using 47159(MRPL1 Antibody) at dilution 1/25. (Original magnification: ?00)



Gel: 8%SDS-PAGE

Lysate: 40 µg, Lane 1-4: K562, HEPG2, 231 and Jurkat cell lysates

Primary antibody:MRPL1 Antibody at dilution 1/350

Secondary antibody: Goat anti rabbit IgG at 1/8000 dilution

Exposure time: 7 seconds

Background

Mammalian mitochondrial ribosomal proteins are encoded by nuclear genes and help in protein synthesis within the mitochondrion. Mitochondrial ribosomes (mitoribosomes) consist of a small 28S subunit and a large 39S subunit. They have an estimated 75% protein to rRNA composition compared to prokaryotic ribosomes, where this ratio is reversed. Another difference between mammalian mitoribosomes and prokaryotic ribosomes is that the latter contain a 5S rRNA. Among different species, the proteins comprising the mitoribosome differ greatly in sequence, and sometimes in biochemical properties, which prevents easy recognition by sequence homology. This gene encodes a 39S subunit protein that belongs to the L1 ribosomal protein family.?

Note: This product is for in vitro research use only