

NEIL1 Antibody

Catalog No: #47164

Orders: order@signalwayantibody.comSupport: tech@signalwayantibody.com

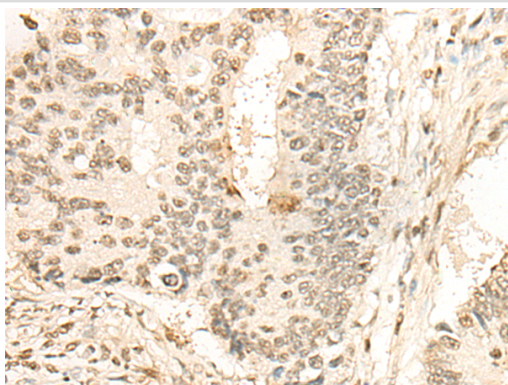
Description

Product Name	NEIL1 Antibody
Host Species	Rabbit
Clonality	Polyclonal
Purification	Antigen affinity purification
Applications	WB, IHC
Species Reactivity	Hu
Specificity	The antibody detects endogenous levels of total NEIL1 protein.
Immunogen Type	protein
Immunogen Description	Fusion protein of human NEIL1
Target Name	NEIL1
Other Names	FPG1; NEI1; hFPG1
Accession No.	Swiss-Prot#:Q96FI4NCBI Gene ID:79661Gene Accssion:BC010876
Uniprot	Q96FI4
GeneID	79661;
Calculated MW	44 kDa
Concentration	1mg/ml
Formulation	Rabbit IgG in pH7.4 PBS, 0.05% NaN ₃ , 40% Glycerol.
Storage	Store at -20C

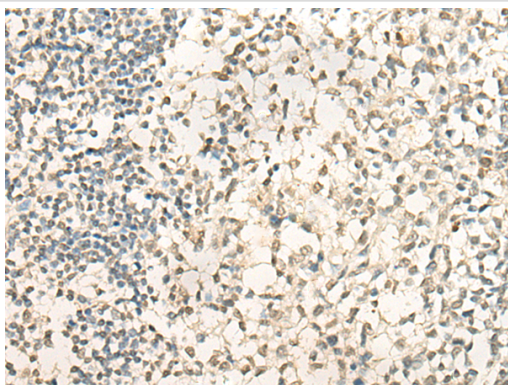
Application Details

Western blotting:1:200-1000Immunofluorescence:1: 20-100

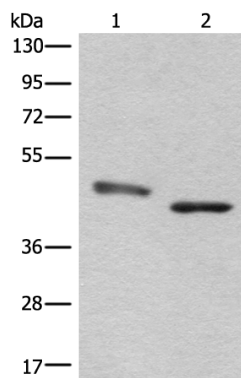
Images



The image is immunohistochemistry of paraffin-embedded Human colorectal cancer tissue using 47164(NEIL1 Antibody) at dilution 1/30. (Original magnification: ?00)



The image is immunohistochemistry of paraffin-embedded Human tonsil tissue using 47164 (NEIL1 Antibody) at dilution 1/30. (Original magnification: 200x)



Gel: 8% SDS-PAGE

Lysate: 40 µg, Lane 1-2: HeLa cell and Human cerebrum tissue lysates

Primary antibody: NEIL1 Antibody at dilution 1/200

Secondary antibody: Goat anti rabbit IgG at 1/8000 dilution

Exposure time: 2 minutes

Background

This gene is a member of the Nei endonuclease VIII-like gene family which encodes DNA glycosylases. The encoded enzyme participates in the DNA repair pathway by initiating base excision repair by removing damaged bases, primarily oxidized pyrimidines. Multiple transcript variants encoding different isoforms have been found for this gene.

Note: This product is for in vitro research use only