

EGR3 Antibody

Catalog No: #40310

Orders: order@signalwayantibody.comSupport: tech@signalwayantibody.com

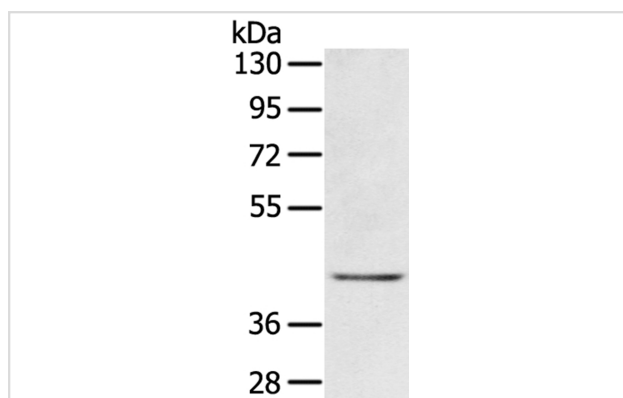
Description

Product Name	EGR3 Antibody
Host Species	Rabbit
Clonality	Polyclonal
Purification	Antigen affinity purification.
Applications	WB
Species Reactivity	Hu Ms Rt
Specificity	The antibody detects endogenous levels of total EGR3 protein.
Immunogen Type	Protein
Immunogen Description	Fusion protein corresponding to residues near the C terminal of human early growth response 3
Target Name	EGR3
Other Names	EGR-3; PILOT
Accession No.	Swiss-Prot:Q06889?Gene Accssion:BC112279
Uniprot	Q06889
GeneID	1960;
SDS-PAGE MW	43KD
Concentration	1.4mg/ml
Formulation	Rabbit IgG in pH7.4 PBS, 0.05% NaN ₃ , 40% Glycerol.
Storage	Store at -20°C

Application Details

Western blotting: 1:200-1:1000

Images



Gel: 8%SDS-PAGE
 Lysate: 40ug Jurkat cell
 Primary antibody: 1/300 dilution
 Secondary antibody dilution: 1/8000
 Exposure time: 3 minutes

Background

This gene encodes a transcriptional regulator that belongs to the EGR family of C2H2-type zinc-finger proteins. It is an immediate-early growth response gene which is induced by mitogenic stimulation. The protein encoded by this gene participates in the transcriptional regulation of genes in

controlling biological rhythm. It may also play a role in a wide variety of processes including muscle development, lymphocyte development, endothelial cell growth and migration, and neuronal development.?

Note: This product is for in vitro research use only