

IFNL3 Antibody

Catalog No: #40311

Orders: order@signalwayantibody.comSupport: tech@signalwayantibody.com

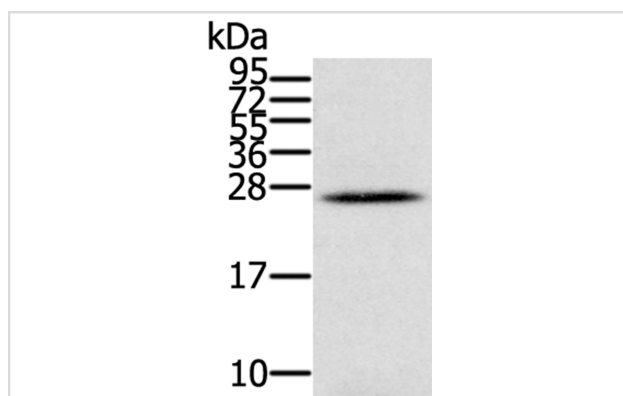
Description

Product Name	IFNL3 Antibody
Host Species	Rabbit
Clonality	Polyclonal
Purification	Antigen affinity purification.
Applications	WB
Species Reactivity	Hu
Specificity	The antibody detects endogenous levels of total IFNL3 protein.
Immunogen Type	Protein
Immunogen Description	Fusion protein corresponding to residues near the C terminal of human interferon, lambda 3
Target Name	IFNL3
Other Names	IL28B; IL28C; IL-28B
Accession No.	Swiss-Prot:Q8IZI9Gene Accssion:BC130314
Uniprot	Q8IZI9
GeneID	282617;
SDS-PAGE MW	22KD
Concentration	1.5mg/ml
Formulation	Rabbit IgG in pH7.4 PBS, 0.05% NaN ₃ , 40% Glycerol.
Storage	Store at -20°C

Application Details

Western blotting: 1:200-1:1000

Images



Gel: 12%SDS-PAGE

Lysate: 40ug Human ovarian cancerPrimary antibody: 1/350 dilution

Secondary antibody dilution: 1/8000

Exposure time: 1 minute

Background

This gene encodes a cytokine distantly related to type I interferons and the IL-10 family. This gene, interleukin 28A (IL28A), and interleukin 29 (IL29) are three closely related cytokine genes that form a cytokine gene cluster on a chromosomal region mapped to 19q13. Expression of the cytokines

encoded by the three genes can be induced by viral infection.

Note: This product is for in vitro research use only