

RBMS2 Antibody

Catalog No: #47188

Orders: order@signalwayantibody.comSupport: tech@signalwayantibody.com

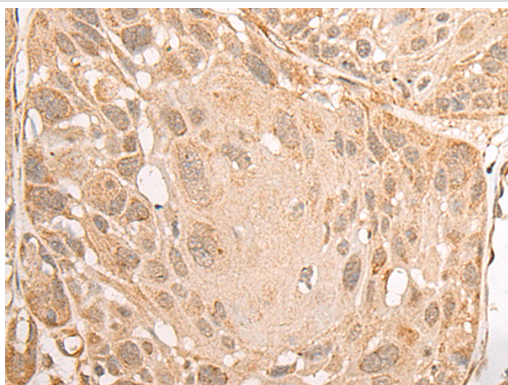
Description

Product Name	RBMS2 Antibody
Host Species	Rabbit
Clonality	Polyclonal
Purification	Antigen affinity purification
Applications	IHC
Species Reactivity	Hu
Specificity	The antibody detects endogenous levels of total RBMS2 protein.
Immunogen Type	protein
Immunogen Description	Fusion protein of human RBMS2
Target Name	RBMS2
Other Names	SCR3
Accession No.	Swiss-Prot#:Q15434NCBI Gene ID:5939Gene Accssion:BC027863
Uniprot	Q15434
GeneID	5939;
Concentration	0.3mg/ml
Formulation	Rabbit IgG in pH7.4 PBS, 0.05% NaN ₃ , 40% Glycerol.
Storage	Store at -20C

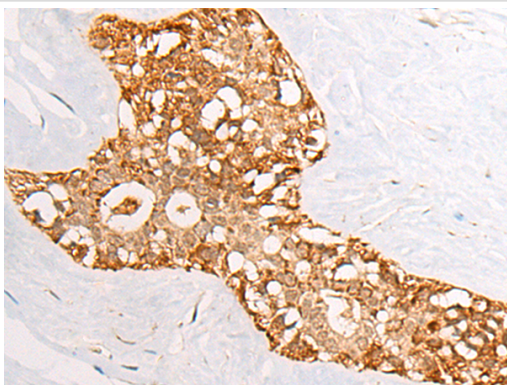
Application Details

Immunofluorescence:1: 20-100

Images



The image is immunohistochemistry of paraffin-embedded Human esophagus cancer tissue using 47188(RBMS2 Antibody) at dilution 1/35. (Original magnification: ?00)



The image is immunohistochemistry of paraffin-embedded Human breast cancer tissue using 47188(RBMS2 Antibody) at dilution 1/35. (Original magnification: 200)

Background

The protein encoded by this gene is a member of a small family of proteins which bind single stranded DNA/RNA. These proteins are characterized by the presence of two sets of ribonucleoprotein consensus sequence (RNP-CS) that contain conserved motifs, RNP1 and RNP2, originally described in RNA binding proteins, and required for DNA binding. The RBMS proteins have been implicated in such diverse functions as DNA replication, gene transcription, cell cycle progression and apoptosis. This protein was isolated by phenotypic complementation of *cdc2* and *cdc13* mutants of yeast and is thought to suppress *cdc2* and *cdc13* mutants through the induction of translation of *cdc2*.

Note: This product is for in vitro research use only