

## RGP1 Antibody

Catalog No: #47189

Orders: [order@signalwayantibody.com](mailto:order@signalwayantibody.com)Support: [tech@signalwayantibody.com](mailto:tech@signalwayantibody.com)

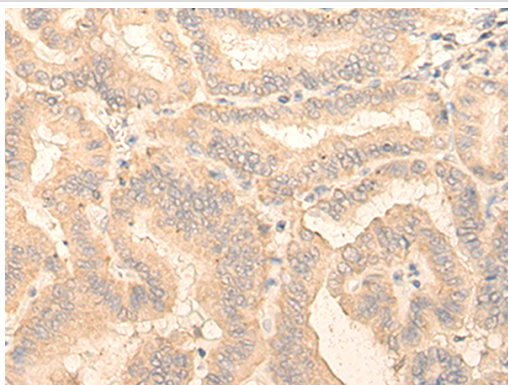
## Description

Product Name	RGP1 Antibody
Host Species	Rabbit
Clonality	Polyclonal
Purification	Antigen affinity purification
Applications	IHC
Species Reactivity	Hu
Specificity	The antibody detects endogenous levels of total RGP1 protein.
Immunogen Type	protein
Immunogen Description	Fusion protein of human RGP1
Target Name	RGP1
Other Names	KIAA0258
Accession No.	Swiss-Prot#:Q92546NCBI Gene ID:9827Gene Accssion:BC001725
Uniprot	Q92546
GeneID	9827;
Concentration	0.6mg/ml
Formulation	Rabbit IgG in pH7.4 PBS, 0.05% NaN <sub>3</sub> , 40% Glycerol.
Storage	Store at -20C

## Application Details

Immunofluorescence:1: 20-100

## Images



The image is immunohistochemistry of paraffin-embedded Human thyroid cancer tissue using 47189(RGP1 Antibody) at dilution 1/20. (Original magnification: 200)

## Background

The RIC1-RGP1 complex acts as a guanine nucleotide exchange factor (GEF), which activates RAB6A by exchanging bound GDP for free GTP and may thereby required for efficient fusion of endosome-derived vesicles with the Golgi compartment. The RIC1-RGP1 complex participates in the recycling of mannose-6-phosphate receptors.

---

Note: This product is for in vitro research use only