

RNF19A Antibody

Catalog No: #47193

Orders: order@signalwayantibody.comSupport: tech@signalwayantibody.com

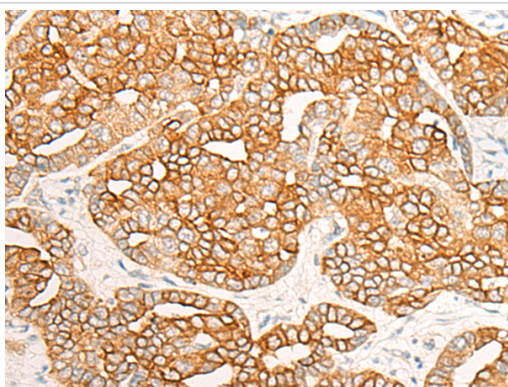
Description

Product Name	RNF19A Antibody
Host Species	Rabbit
Clonality	Polyclonal
Purification	Antigen affinity purification
Applications	IHC
Species Reactivity	Hu
Specificity	The antibody detects endogenous levels of total RNF19A protein.
Immunogen Type	peptide
Immunogen Description	Synthetic peptide of human RNF19A
Target Name	RNF19A
Other Names	RNF19
Accession No.	Swiss-Prot#:Q9NV58 NCBI Gene ID:25897Gene Accssion:NP_056250
Uniprot	Q9NV58
GeneID	25897;
Concentration	1mg/ml
Formulation	Rabbit IgG in pH7.4 PBS, 0.05% NaN ₃ , 40% Glycerol.
Storage	Store at -20C

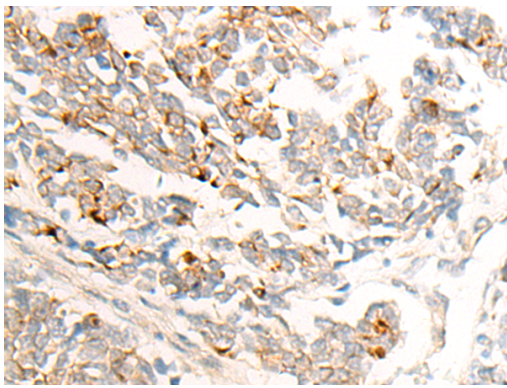
Application Details

Immunofluorescence:1: 25-100

Images



The image is immunohistochemistry of paraffin-embedded Human liver cancer tissue using 47193(RNF19A Antibody) at dilution 1/25. (Original magnification: 200)



The image is immunohistochemistry of paraffin-embedded Human lung cancer tissue using 47193(RNF19A Antibody) at dilution 1/25. (Original magnification: 200)

Background

This gene encodes a member of the ring between ring fingers (RBR) protein family, and the encoded protein contains two RING-finger motifs and an in between RING fingers motif. This protein is an E3 ubiquitin ligase that is localized to Lewy bodies, and ubiquitylates synphilin-1, which is an interacting protein of alpha synuclein in neurons. The encoded protein may be involved in amyotrophic lateral sclerosis and Parkinson's disease. Alternative splicing results in multiple transcript variants.

Note: This product is for in vitro research use only