

RSPH14 Antibody

Catalog No: #47195

Orders: order@signalwayantibody.comSupport: tech@signalwayantibody.com

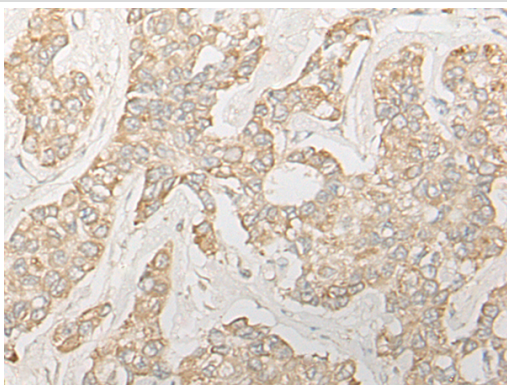
Description

Product Name	RSPH14 Antibody
Host Species	Rabbit
Clonality	Polyclonal
Purification	Antigen affinity purification
Applications	IHC
Species Reactivity	Hu
Specificity	The antibody detects endogenous levels of total RSPH14 protein.
Immunogen Type	protein
Immunogen Description	Fusion protein of human RSPH14
Target Name	RSPH14
Other Names	RTDR1
Accession No.	Swiss-Prot#:Q9UHP6NCBI Gene ID:27156Gene Accssion:BC008986
Uniprot	Q9UHP6
GeneID	27156;
Concentration	1.1mg/ml
Formulation	Rabbit IgG in pH7.4 PBS, 0.05% NaN ₃ , 40% Glycerol.
Storage	Store at -20C

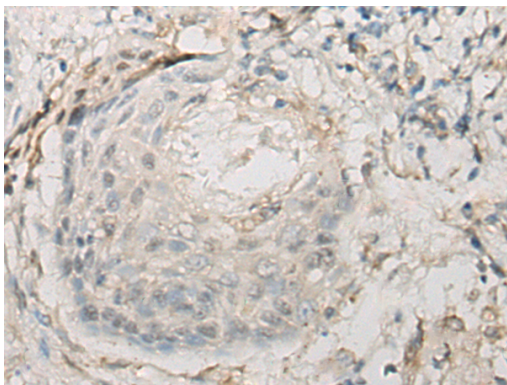
Application Details

Immunofluorescence:1: 20-100

Images



The image is immunohistochemistry of paraffin-embedded Human liver cancer tissue using 47195(RSPH14 Antibody) at dilution 1/30. (Original magnification: ?00)



The image is immunohistochemistry of paraffin-embedded Human esophagus cancer tissue using 47195(RSPH14 Antibody) at dilution 1/30. (Original magnification: ?00)

Background

This gene encodes a protein with no known function but with slight similarity to a yeast vacuolar protein. The gene is located in a region deleted in pediatric rhabdoid tumors of the brain, kidney and soft tissues, but mutations in this gene have not been associated with the disease.

Note: This product is for in vitro research use only