

RSU1 Antibody

Catalog No: #47196

Orders: order@signalwayantibody.comSupport: tech@signalwayantibody.com

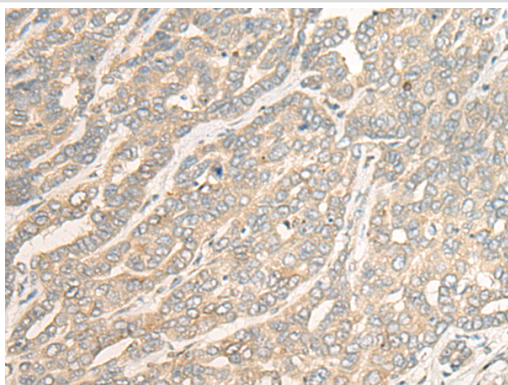
Description

Product Name	RSU1 Antibody
Host Species	Rabbit
Clonality	Polyclonal
Purification	Antigen affinity purification
Applications	WB, IHC
Species Reactivity	Hu
Specificity	The antibody detects endogenous levels of total RSU1 protein.
Immunogen Type	protein
Immunogen Description	Fusion protein of human RSU1
Target Name	RSU1
Other Names	RSP-1
Accession No.	Swiss-Prot#:Q15404NCBI Gene ID:6251Gene Accssion:BC005993
Uniprot	Q15404
GeneID	6251;
Calculated MW	32 kDa
Concentration	1mg/ml
Formulation	Rabbit IgG in pH7.4 PBS, 0.05% NaN ₃ , 40% Glycerol.
Storage	Store at -20C

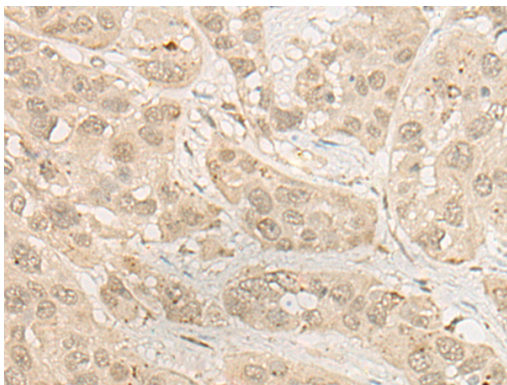
Application Details

Western blotting:1:500-2000Immunofluorescence:1: 25-100

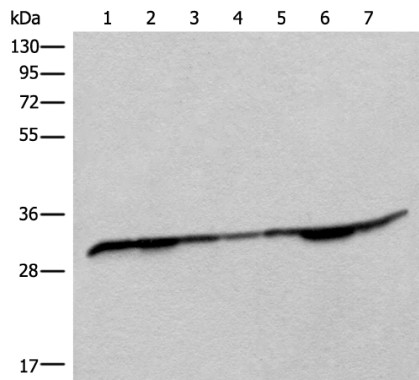
Images



The image is immunohistochemistry of paraffin-embedded Human liver cancer tissue using 47196(RSU1 Antibody) at dilution 1/30. (Original magnification: ?00)



The image is immunohistochemistry of paraffin-embedded Human esophagus cancer tissue using 47196(RSU1 Antibody) at dilution 1/30. (Original magnification: ?00)



Gel: 8%SDS-PAGE

Lysate: 40 µg, Lane 1-7: Rat heart tissue, Mouse heart tissue, Rat brain tissue, Mouse brain tissue, HEPG2 cell, Jurkat and Lovo cell lysates

Primary antibody:RSU1 Antibody at dilution 1/400

Secondary antibody: Goat anti rabbit IgG at 1/8000 dilution

Exposure time: 3 seconds

Background

This gene encodes a protein that is involved in the Ras signal transduction pathway, growth inhibition, and nerve-growth factor induced differentiation processes, as determined in mouse and human cell line studies. In mouse, the encoded protein was initially isolated based on its ability to inhibit v-Ras transformation. Multiple alternatively spliced transcript variants for this gene have been reported; one of these variants was found only in glioma tumors.

Note: This product is for in vitro research use only