

SGCD Antibody

Catalog No: #47201

Orders: order@signalwayantibody.comSupport: tech@signalwayantibody.com

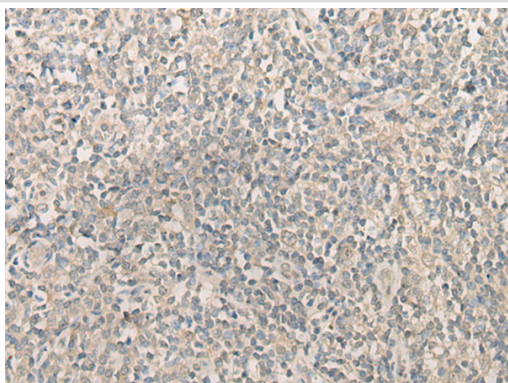
Description

Product Name	SGCD Antibody
Host Species	Rabbit
Clonality	Polyclonal
Purification	Antigen affinity purification
Applications	WB, IHC
Species Reactivity	Hu
Specificity	The antibody detects endogenous levels of total SGCD protein.
Immunogen Type	protein
Immunogen Description	Fusion protein of human SGCD
Target Name	SGCD
Other Names	SGD; DAGD; 35DAG; CMD1L; SGCDP; SG-delta
Accession No.	Swiss-Prot#:Q92629NCBI Gene ID:6444Gene Accssion:BC020740
Uniprot	Q92629
GeneID	6444;
Calculated MW	32 kDa
Concentration	0.7mg/ml
Formulation	Rabbit IgG in pH7.4 PBS, 0.05% NaN ₃ , 40% Glycerol.
Storage	Store at -20C

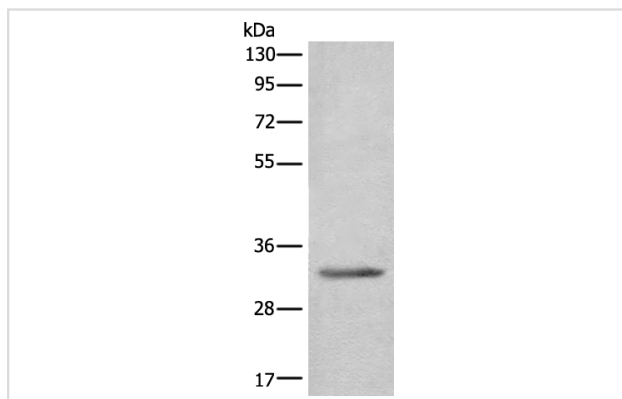
Application Details

Western blotting:1:200-1000Immunofluorescence:1: 25-100

Images



The image is immunohistochemistry of paraffin-embedded Human tonsil tissue using 47201(SGCD Antibody) at dilution 1/20. (Original magnification: ?00)



Gel: 8%SDS-PAGE
Lysate: 40 µg, Lane: Jurkat cell lysate
Primary antibody: SGCD Antibody at dilution 1/300
Secondary antibody: Goat anti rabbit IgG at 1/8000 dilution
Exposure time: 3 seconds

Background

The protein encoded by this gene is one of the four known components of the sarcoglycan complex, which is a subcomplex of the dystrophin-glycoprotein complex (DGC). DGC forms a link between the F-actin cytoskeleton and the extracellular matrix. This protein is expressed most abundantly in skeletal and cardiac muscle. Mutations in this gene have been associated with autosomal recessive limb-girdle muscular dystrophy and dilated cardiomyopathy. Alternatively spliced transcript variants encoding distinct isoforms have been observed for this gene.?

Note: This product is for in vitro research use only