

SGCG Antibody

Catalog No: #47202

Orders: order@signalwayantibody.comSupport: tech@signalwayantibody.com

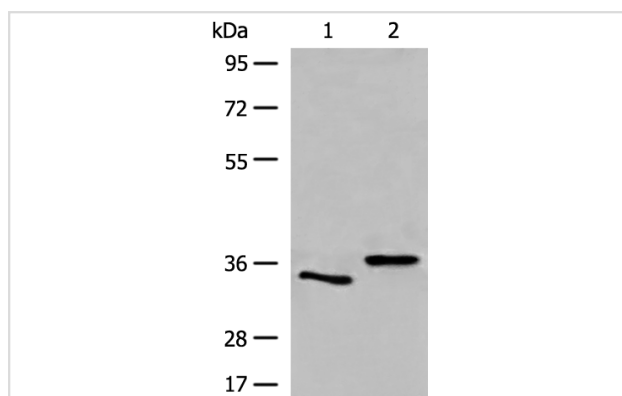
Description

Product Name	SGCG Antibody
Host Species	Rabbit
Clonality	Polyclonal
Purification	Antigen affinity purification
Applications	WB
Species Reactivity	Hu
Specificity	The antibody detects endogenous levels of total SGCG protein.
Immunogen Type	peptide
Immunogen Description	Synthetic peptide of human SGCG
Target Name	SGCG
Other Names	A4; MAM; DMDA; SCG3; 35DAG; DAGA4; DMDA1; LGMD2C; SCARMD2; gamma-SG
Accession No.	Swiss-Prot#:Q13326NCBI Gene ID:6445Gene Accssion:NP_000222
Uniprot	Q13326
GeneID	6445;
Calculated MW	32 kDa
Concentration	0.5mg/ml
Formulation	Rabbit IgG in pH7.4 PBS, 0.05% NaN ₃ , 40% Glycerol.
Storage	Store at -20C

Application Details

Western blotting:1:200-1000

Images



Gel: 8%SDS-PAGE

Lysate: 40 µg, Lane 1-2: Human heart tissue and Mouse heart tissue lysates

Primary antibody:SGCG Antibody at dilution 1/200

Secondary antibody: Goat anti rabbit IgG at 1/8000 dilution

Exposure time: 15 seconds

Background

This gene encodes gamma-sarcoglycan, one of several sarcolemmal transmembrane glycoproteins that interact with dystrophin. The dystrophin-glycoprotein complex (DGC) spans the sarcolemma and is comprised of dystrophin, syntrophin, alpha- and beta-dystroglycans and

sarcoglycans. The DGC provides a structural link between the subsarcolemmal cytoskeleton and the extracellular matrix of muscle cells. Defects in the encoded protein can lead to early onset autosomal recessive muscular dystrophy, in particular limb-girdle muscular dystrophy, type 2C (LGMD2C).

Note: This product is for in vitro research use only