

## SGCG Antibody

Catalog No: #47203

Orders: [order@signalwayantibody.com](mailto:order@signalwayantibody.com)Support: [tech@signalwayantibody.com](mailto:tech@signalwayantibody.com)

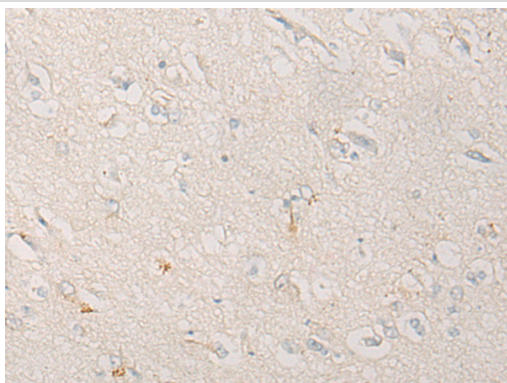
## Description

Product Name	SGCG Antibody
Host Species	Rabbit
Clonality	Polyclonal
Purification	Antigen affinity purification
Applications	IHC
Species Reactivity	Hu
Specificity	The antibody detects endogenous levels of total SGCG protein.
Immunogen Type	peptide
Immunogen Description	Synthetic peptide of human SGCG
Target Name	SGCG
Other Names	A4; MAM; DMDA; SCG3; 35DAG; DAGA4; DMDA1; LGMD2C; SCARMD2; gamma-SG
Accession No.	Swiss-Prot#:Q13326 NCBI Gene ID:6445Gene Accssion:NP_000222
Uniprot	Q13326
GeneID	6445;
Concentration	0.4mg/ml
Formulation	Rabbit IgG in pH7.4 PBS, 0.05% NaN <sub>3</sub> , 40% Glycerol.
Storage	Store at -20C

## Application Details

Immunofluorescence:1: 20-100

## Images



The image is immunohistochemistry of paraffin-embedded Human brain tissue using 47203(SGCG Antibody) at dilution 1/20. (Original magnification: ?00)

## Background

This gene encodes gamma-sarcoglycan, one of several sarcolemmal transmembrane glycoproteins that interact with dystrophin. The dystrophin-glycoprotein complex (DGC) spans the sarcolemma and is comprised of dystrophin, syntrophin, alpha- and beta-dystroglycans and sarcoglycans. The DGC provides a structural link between the subsarcolemmal cytoskeleton and the extracellular matrix of muscle cells. Defects in the encoded protein can lead to early onset autosomal recessive muscular dystrophy, in particular limb-girdle muscular dystrophy, type 2C (LGMD2C).?

---

Note: This product is for in vitro research use only