

SLC29A2 Antibody

Catalog No: #47206

Orders: order@signalwayantibody.comSupport: tech@signalwayantibody.com

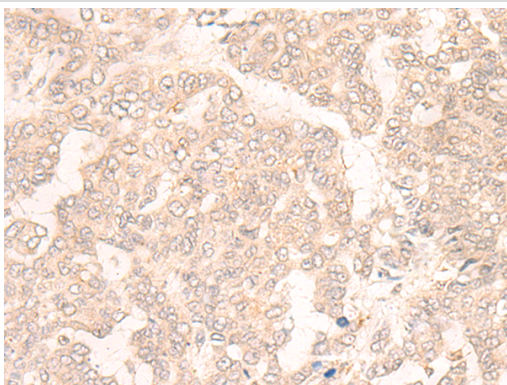
Description

Product Name	SLC29A2 Antibody
Host Species	Rabbit
Clonality	Polyclonal
Purification	Antigen affinity purification
Applications	IHC
Species Reactivity	Hu
Specificity	The antibody detects endogenous levels of total SLC29A2 protein.
Immunogen Type	peptide
Immunogen Description	Synthetic peptide of human SLC29A2
Target Name	SLC29A2
Other Names	ENT2; DER12; HNP36
Accession No.	Swiss-Prot#:Q14542 NCBI Gene ID:3177Gene Accssion:NP_001523
Uniprot	Q14542
GeneID	3177;
Concentration	0.4mg/ml
Formulation	Rabbit IgG in pH7.4 PBS, 0.05% NaN ₃ , 40% Glycerol.
Storage	Store at -20C

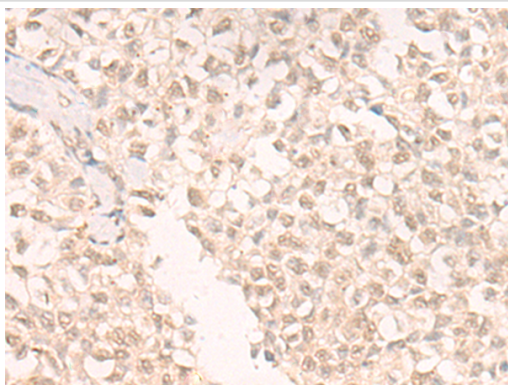
Application Details

Immunofluorescence:1: 20-100

Images



The image is immunohistochemistry of paraffin-embedded Human liver cancer tissue using 47206(SLC29A2 Antibody) at dilution 1/20. (Original magnification: ?00)



The image is immunohistochemistry of paraffin-embedded Human ovarian cancer tissue using 47206(SLC29A2 Antibody) at dilution 1/20. (Original magnification: ?00)

Background

The uptake of nucleosides by transporters, such as SLC29A2, is essential for nucleotide synthesis by salvage pathways in cells that lack de novo biosynthetic pathways. Nucleoside transport also plays a key role in the regulation of many physiologic processes through its effect on adenosine concentration at the cell surface (Griffiths et al., 1997 [PubMed 9396714]).

Note: This product is for in vitro research use only