

## SMG8 Antibody

Catalog No: #47210

Orders: [order@signalwayantibody.com](mailto:order@signalwayantibody.com)Support: [tech@signalwayantibody.com](mailto:tech@signalwayantibody.com)

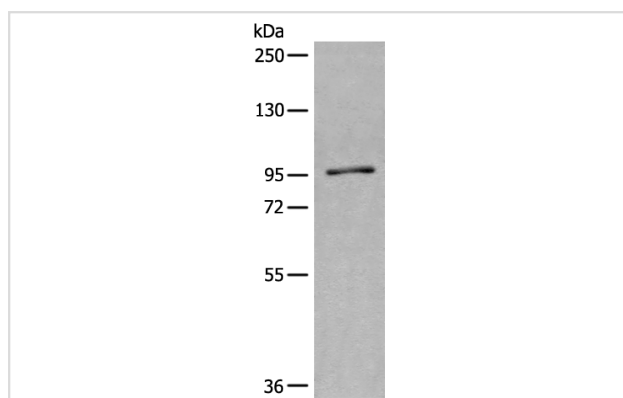
## Description

Product Name	SMG8 Antibody
Host Species	Rabbit
Clonality	Polyclonal
Purification	Antigen affinity purification
Applications	WB
Species Reactivity	Hu
Specificity	The antibody detects endogenous levels of total SMG8 protein.
Immunogen Type	peptide
Immunogen Description	Synthetic peptide of human SMG8
Target Name	SMG8
Other Names	C17orf71
Accession No.	Swiss-Prot#:Q8ND04NCBI Gene ID:55181Gene Accssion:NP_060619
Uniprot	Q8ND04
GeneID	55181;
Calculated MW	110 kDa
Concentration	0.5mg/ml
Formulation	Rabbit IgG in pH7.4 PBS, 0.05% NaN <sub>3</sub> , 40% Glycerol.
Storage	Store at -20C

## Application Details

Western blotting:1:200-1000

## Images



Gel: 6%SDS-PAGE  
 Lysate: 40 µg, Lane: TM4 cell lysate  
 Primary antibody:SMG8 Antibody at dilution 1/200  
 Secondary antibody: Goat anti rabbit IgG at 1/8000 dilution  
 Exposure time: 10 minutes

## Background

Involved in nonsense-mediated decay (NMD) of mRNAs containing premature stop codons. Is recruited by release factors to stalled ribosomes together with SMG1 and SMG9 (forming the SMG1C protein kinase complex) and, in the SMG1C complex, is required to mediate the recruitment of

SMG1 to the ribosome:SURF complex and to suppress SMG1 kinase activity until the ribosome:SURF complex locates the exon junction complex (EJC). Acts as a regulator of kinase activity.

---

Note: This product is for in vitro research use only