

## SYNM Antibody

Catalog No: #47214

Orders: [order@signalwayantibody.com](mailto:order@signalwayantibody.com)Support: [tech@signalwayantibody.com](mailto:tech@signalwayantibody.com)

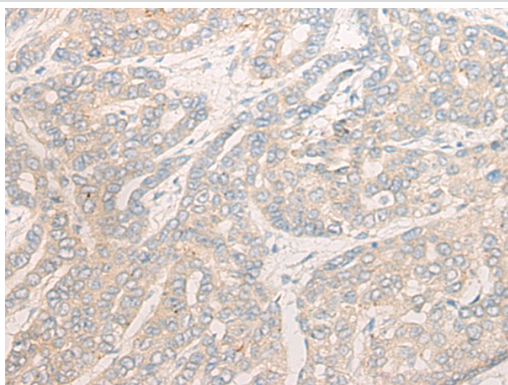
## Description

Product Name	SYNM Antibody
Host Species	Rabbit
Clonality	Polyclonal
Purification	Antigen affinity purification
Applications	IHC
Species Reactivity	Hu
Specificity	The antibody detects endogenous levels of total SYNM protein.
Immunogen Type	peptide
Immunogen Description	Synthetic peptide of human SYNM
Target Name	SYNM
Other Names	DMN; SYN
Accession No.	Swiss-Prot#:O15061 NCBI Gene ID:23336Gene Accssion:NP_056101
Uniprot	O15061
GeneID	23336;
Concentration	0.6mg/ml
Formulation	Rabbit IgG in pH7.4 PBS, 0.05% NaN <sub>3</sub> , 40% Glycerol.
Storage	Store at -20C

## Application Details

Immunofluorescence:1: 20-100

## Images



The image is immunohistochemistry of paraffin-embedded Human liver cancer tissue using 47214(SYNM Antibody) at dilution 1/20. (Original magnification: ?00)

## Background

The protein encoded by this gene is an intermediate filament (IF) family member. IF proteins are cytoskeletal proteins that confer resistance to mechanical stress and are encoded by a dispersed multigene family. This protein has been found to form a linkage between desmin, which is a subunit of the IF network, and the extracellular matrix, and provides an important structural support in muscle. Two alternatively spliced variants encoding different isoforms have been described for this gene.

---

Note: This product is for in vitro research use only