

VPS18 Antibody

Catalog No: #47235

Orders: order@signalwayantibody.comSupport: tech@signalwayantibody.com

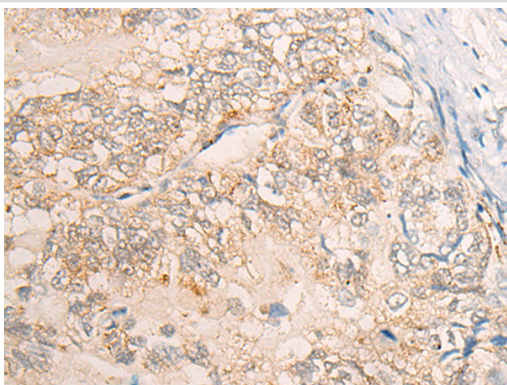
Description

| | |
|-----------------------|---|
| Product Name | VPS18 Antibody |
| Host Species | Rabbit |
| Clonality | Polyclonal |
| Purification | Antigen affinity purification |
| Applications | WB, IHC |
| Species Reactivity | Hu |
| Specificity | The antibody detects endogenous levels of total VPS18 protein. |
| Immunogen Type | protein |
| Immunogen Description | Fusion protein of human VPS18 |
| Target Name | VPS18 |
| Other Names | PEP3 |
| Accession No. | Swiss-Prot#:Q9P253NCBI Gene ID:57617Gene Accssion:BC001513 |
| Uniprot | Q9P253 |
| GeneID | 57617; |
| Calculated MW | 110 kDa |
| Concentration | 0.2mg/ml |
| Formulation | Rabbit IgG in pH7.4 PBS, 0.05% NaN ₃ , 40% Glycerol. |
| Storage | Store at -20C |

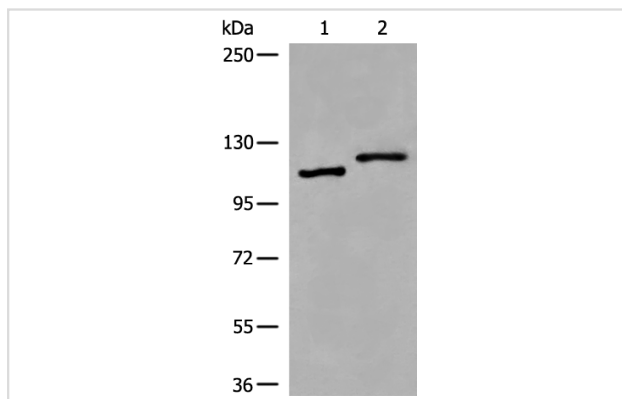
Application Details

Western blotting:1:200-1000Immunofluorescence:1: 25-100

Images



The image is immunohistochemistry of paraffin-embedded Human gastric cancer tissue using 47235(VPS18 Antibody) at dilution 1/35. (Original magnification: ?00)



Gel: 6%SDS-PAGE

Lysate: 40 µg, Lane 1-2: HeLa and K562 cell lysates

Primary antibody: VPS18 Antibody at dilution 1/400

Secondary antibody: Goat anti rabbit IgG at 1/8000 dilution

Exposure time: 50 seconds

Background

Vesicle mediated protein sorting plays an important role in segregation of intracellular molecules into distinct organelles. Genetic studies in yeast have identified more than 40 vacuolar protein sorting (VPS) genes involved in vesicle transport to vacuoles. This gene encodes the human homolog of yeast class C Vps18 protein. The mammalian class C Vps proteins are predominantly associated with late endosomes/lysosomes, and like their yeast counterparts, may mediate vesicle trafficking steps in the endosome/lysosome pathway.

Note: This product is for in vitro research use only