

WDR6 Antibody

Catalog No: #47237

Orders: order@signalwayantibody.comSupport: tech@signalwayantibody.com

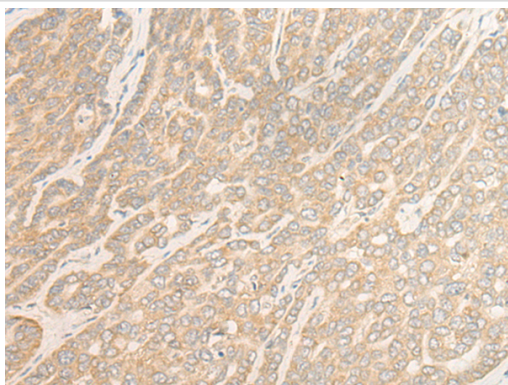
Description

Product Name	WDR6 Antibody
Host Species	Rabbit
Clonality	Polyclonal
Purification	Antigen affinity purification
Applications	IHC
Species Reactivity	Hu
Specificity	The antibody detects endogenous levels of total WDR6 protein.
Immunogen Type	protein
Immunogen Description	Fusion protein of human WDR6
Target Name	WDR6
Accession No.	Swiss-Prot#:Q9NNW5NCBI Gene ID:11180Gene Accssion:BC002826
Uniprot	Q9NNW5
GeneID	11180;
Concentration	1.2mg/ml
Formulation	Rabbit IgG in pH7.4 PBS, 0.05% NaN ₃ , 40% Glycerol.
Storage	Store at -20C

Application Details

Immunofluorescence: 1: 20-100

Images



The image is immunohistochemistry of paraffin-embedded Human liver cancer tissue using 47237(WDR6 Antibody) at dilution 1/35. (Original magnification: ?00)

Background

This gene encodes a member of the WD repeat protein family. WD repeats are minimally conserved regions of approximately 40 amino acids typically bracketed by gly-his and trp-asg (GH-WD), which may facilitate formation of heterotrimeric or multiprotein complexes. The encoded protein interacts with serine/threonine kinase 11, and is implicated in cell growth arrest. Alternative splicing results in multiple transcript variants encoding different isoforms.

Note: This product is for in vitro research use only