

WHRN Antibody

Catalog No: #47238

Orders: order@signalwayantibody.comSupport: tech@signalwayantibody.com

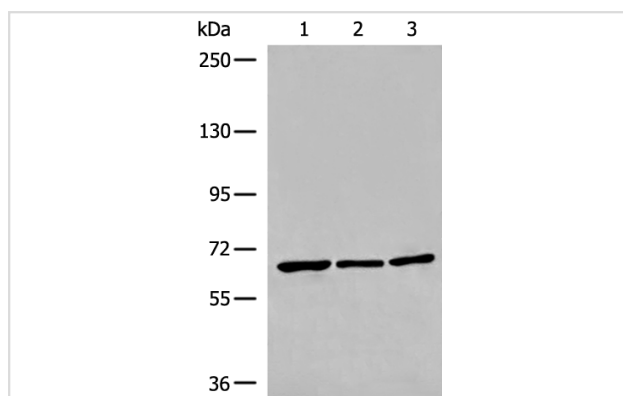
Description

Product Name	WHRN Antibody
Host Species	Rabbit
Clonality	Polyclonal
Purification	Antigen affinity purification
Applications	WB
Species Reactivity	Hu
Specificity	The antibody detects endogenous levels of total WHRN protein.
Immunogen Type	peptide
Immunogen Description	Synthetic peptide of human WHRN
Target Name	WHRN
Other Names	WI; CIP98; USH2D; DFNB31; PDZD7B
Accession No.	Swiss-Prot#:Q9P202NCBI Gene ID:25861Gene Accssion:NP_056219
Uniprot	Q9P202
GeneID	25861;
Calculated MW	97 kDa
Concentration	0.7mg/ml
Formulation	Rabbit IgG in pH7.4 PBS, 0.05% NaN ₃ , 40% Glycerol.
Storage	Store at -20C

Application Details

Western blotting:1:200-1000

Images



Gel: 6%SDS-PAGE

Lysate: 40 µg, Lane 1-3: 293T, PC-3 and TM4 cell lysates

Primary antibody:WHRN Antibody at dilution 1/250

Secondary antibody: Goat anti rabbit IgG at 1/8000 dilution

Exposure time: 5 minutes

Background

This gene is thought to function in the organization and stabilization of stereocilia elongation and actin cytoskeletal assembly, based on studies of the related mouse gene. Mutations in this gene have been associated with autosomal recessive non-syndromic deafness and Usher Syndrome.

Alternative splicing of this gene results in multiple transcript variants encoding different isoforms.

Note: This product is for in vitro research use only