

WWTR1 Antibody

Catalog No: #47239

Orders: order@signalwayantibody.comSupport: tech@signalwayantibody.com

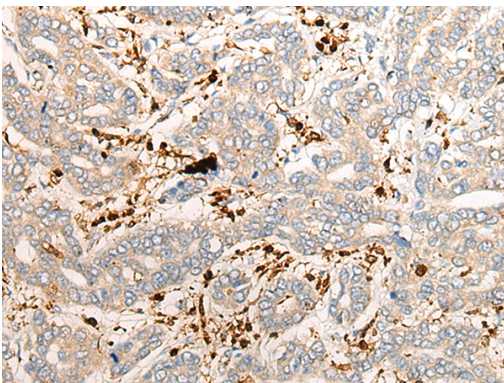
Description

Product Name	WWTR1 Antibody
Host Species	Rabbit
Clonality	Polyclonal
Purification	Antigen affinity purification
Applications	IHC
Species Reactivity	Hu
Specificity	The antibody detects endogenous levels of total WWTR1 protein.
Immunogen Type	protein
Immunogen Description	Fusion protein of human WWTR1
Target Name	WWTR1
Other Names	TAZ
Accession No.	Swiss-Prot#:Q9GZV5NCBI Gene ID:25937Gene Accssion:BC014052
Uniprot	Q9GZV5
GeneID	25937;
Concentration	0.8mg/ml
Formulation	Rabbit IgG in pH7.4 PBS, 0.05% NaN ₃ , 40% Glycerol.
Storage	Store at -20C

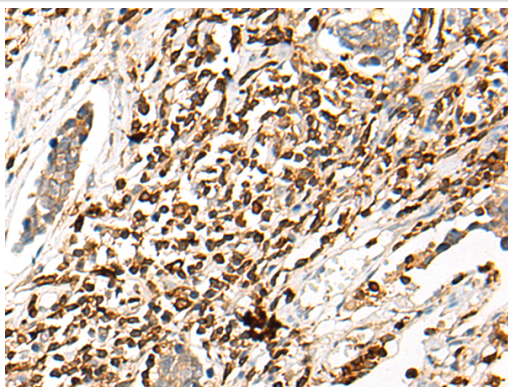
Application Details

Immunofluorescence:1: 25-100

Images



The image is immunohistochemistry of paraffin-embedded Human liver cancer tissue using 47239(WWTR1 Antibody) at dilution 1/35. (Original magnification: ?00)



The image is immunohistochemistry of paraffin-embedded Human lung cancer tissue using 47239(WWTR1 Antibody) at dilution 1/35. (Original magnification: 200)

Background

Transcriptional coactivator which acts as a downstream regulatory target in the Hippo signaling pathway that plays a pivotal role in organ size control and tumor suppression by restricting proliferation and promoting apoptosis. The core of this pathway is composed of a kinase cascade wherein STK3/MST2 and STK4/MST1, in complex with its regulatory protein SAV1, phosphorylates and activates LATS1/2 in complex with its regulatory protein MOB1, which in turn phosphorylates and inactivates YAP1 oncoprotein and WWTR1/TAZ. WWTR1 enhances PAX8 and NKX2-1/TTF1-dependent gene activation. Regulates the nuclear accumulation of SMADS and has a key role in coupling them to the transcriptional machinery such as the mediator complex. Regulates embryonic stem-cell self-renewal, promotes cell proliferation and epithelial-mesenchymal transition.

Note: This product is for in vitro research use only