

SEMA4G Antibody

Catalog No: #40331



Orders: order@signalwayantibody.com
Support: tech@signalwayantibody.com

Description

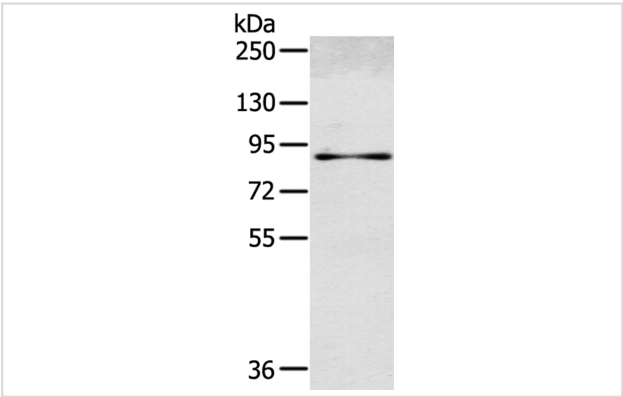
Product Name	SEMA4G Antibody
Host Species	Rabbit
Clonality	Polyclonal
Purification	Antigen affinity purification.
Applications	WB IHC
Species Reactivity	Hu
Specificity	The antibody detects endogenous levels of total SEMA4G protein.
Immunogen Type	Protein
Immunogen Description	Fusion protein corresponding to residues near the C terminal of human sema domain, immunoglobulin domain (Ig), transmembrane domain (TM) and short cytoplasmic domain, (semaphorin) 4G
Target Name	SEMA4G
Accession No.	Swiss-Prot:Q9NTN9Gene Accssion:BC128579
Uniprot	Q9NTN9
GeneID	57715;
SDS-PAGE MW	91KD
Concentration	1.5mg/ml
Formulation	Rabbit IgG in pH7.4 PBS, 0.05% NaN3, 40% Glycerol.
Storage	Store at -20°C

Application Details

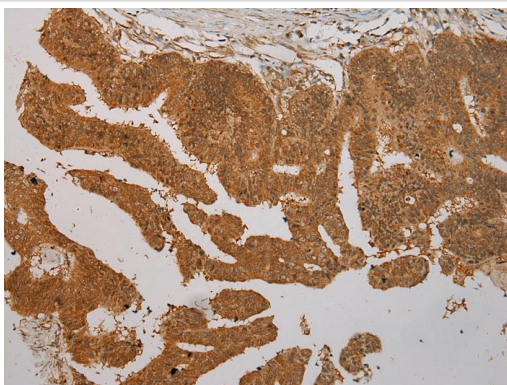
Western blotting: 1:200-1:1000

Immunohistochemistry: 1:100-1:200

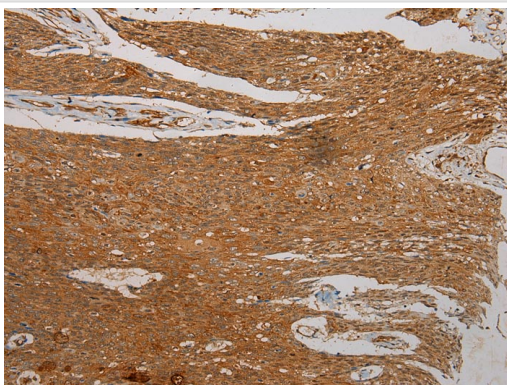
Images



Gel: 6%SDS-PAGE
Lysate: 40ug Human normal colon tissuePrimary antibody:
1/600 dilution
Secondary antibody dilution: 1/8000
Exposure time: 5 seconds



Immunohistochemical analysis of paraffin-embedded Human Colorectal cancer tissue using #40331 at dilution 1/100.



Immunohistochemical analysis of paraffin-embedded Human Esophagus cancer tissue using #40331 at dilution 1/100.

Background

Semaphorins are a large family of conserved secreted and membrane associated proteins which possess a semaphorin (Sema) domain and a PSI domain (found in plexins, semaphorins and integrins) in the N-terminal extracellular portion. Based on sequence and structural similarities, semaphorins are put into eight classes: invertebrates contain classes 1 and 2, viruses have class V, and vertebrates contain classes 3-7.

Note: This product is for in vitro research use only