

SERPINB11 Antibody

Catalog No: #40332

Orders: order@signalwayantibody.comSupport: tech@signalwayantibody.com

Description

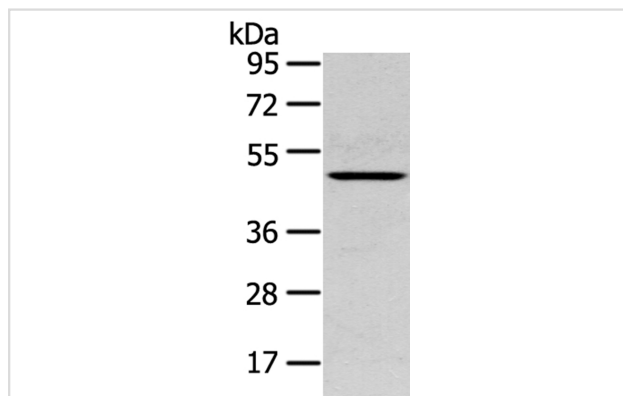
Product Name	SERPINB11 Antibody
Host Species	Rabbit
Clonality	Polyclonal
Purification	Antigen affinity purification.
Applications	WB IHC
Species Reactivity	Hu Ms
Specificity	The antibody detects endogenous levels of total SERPINB11 protein.
Immunogen Type	Protein
Immunogen Description	Fusion protein of human serpin peptidase inhibitor, clade B (ovalbumin), member 11 (gene/pseudogene)
Target Name	SERPINB11
Other Names	EPIPIN; SERPIN11
Accession No.	Swiss-Prot:Q96P15Gene Accssion:BC069596
Uniprot	Q96P15
GeneID	89778;
SDS-PAGE MW	44KD
Concentration	1.2mg/ml
Formulation	Rabbit IgG in pH7.4 PBS, 0.05% NaN ₃ , 40% Glycerol.
Storage	Store at -20°C

Application Details

Western blotting: 1:500-1:2000

Immunohistochemistry: 1:100-1:200

Images

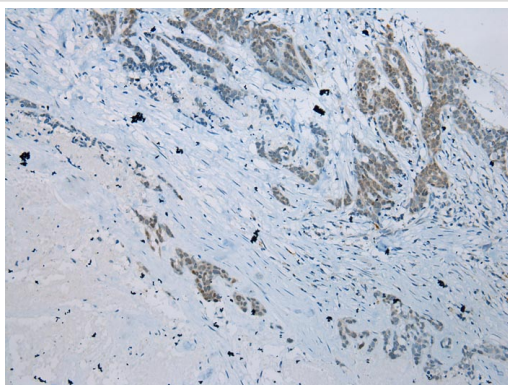


Gel: 8%SDS-PAGE

Lysate: 40ug Mouse lung tissuePrimary antibody: 1/400 dilution

Secondary antibody dilution: 1/8000

Exposure time: 30 seconds



Immunohistochemical analysis of paraffin-embedded Human thyroid cancer tissue using #40332 at dilution 1/100.

Background

SerpinB11 (serpin peptidase inhibitor, clade B (ovalbumin), member 11), also known as EPIPIN or SERPIN11, is a 392 amino acid cytoplasmic protein that belongs to the Ov-serpin subfamily and serpin family. Like other members of the serpin family, SerpinB11 has been identified as a noninhibitory intracellular protein. The gene encoding SerpinB11 maps to human chromosome 18, which houses over 300 protein-coding genes and contains nearly 76 million bases. There are a variety of diseases associated with defects in chromosome 18-localized genes, some of which include Trisomy 18 (also known as Edwards syndrome), Niemann-Pick disease, hereditary hemorrhagic telangiectasia, erythropoietic protoporphyria and follicular lymphomas.

Note: This product is for in vitro research use only