

STC2 Antibody

Catalog No: #40339

Orders: order@signalwayantibody.comSupport: tech@signalwayantibody.com

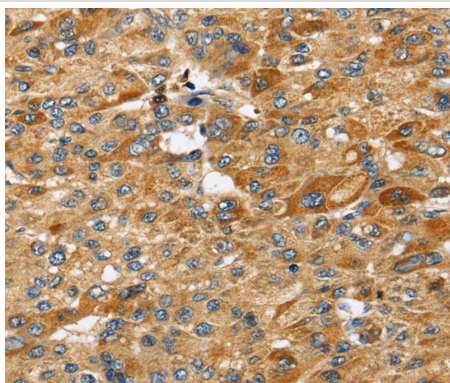
Description

Product Name	STC2 Antibody
Host Species	Rabbit
Clonality	Polyclonal
Purification	Antigen affinity purification.
Applications	IHC
Species Reactivity	Hu
Specificity	The antibody detects endogenous levels of total STC2 protein.
Immunogen Type	Protein
Immunogen Description	Full length fusion protein
Target Name	STC2
Other Names	STC-2; STCRP
Accession No.	Swiss-Prot:O76061Gene Accssion:BC000658
Uniprot	O76061
GeneID	8614;
Concentration	1.4mg/ml
Formulation	Rabbit IgG in pH7.4 PBS, 0.05% NaN ₃ , 40% Glycerol.
Storage	Store at -20°C

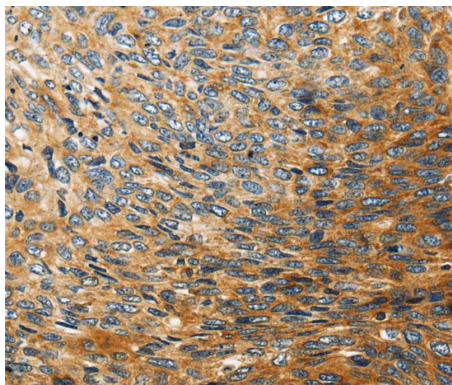
Application Details

Immunohistochemistry:1:25-1:100

Images



Immunohistochemical analysis of paraffin-embedded Human liver cancer tissue using #40339 at dilution 1/25.



Immunohistochemical analysis of paraffin-embedded Human esophagus cancer tissue using #40339 at dilution 1/25.

Background

This gene encodes a secreted, homodimeric glycoprotein that is expressed in a wide variety of tissues and may have autocrine or paracrine functions. The encoded protein has 10 of its 15 cysteine residues conserved among stanniocalcin family members and is phosphorylated by casein kinase 2 exclusively on its serine residues. Its C-terminus contains a cluster of histidine residues which may interact with metal ions.?

Note: This product is for in vitro research use only