

PLD2 (Phospho-Tyr511) Antibody

Catalog No: #12968



Package Size: #12968-1 50ul #12968-2 100ul

Orders: order@signalwayantibody.com
Support: tech@signalwayantibody.com

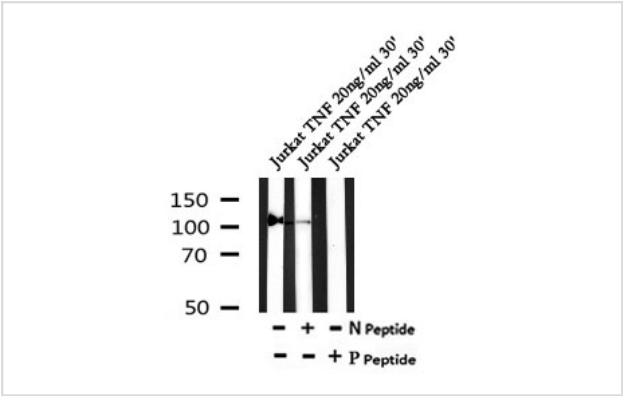
Description

Product Name	PLD2 (Phospho-Tyr511) Antibody
Host Species	Rabbit
Clonality	Polyclonal
Purification	The antibody is from purified rabbit serum by affinity purification via sequential chromatography on phospho- and non-phospho-peptide affinity columns.
Applications	WB
Species Reactivity	Hu, Ms, Rt
Specificity	Phospho-PLD2 (Phospho-Tyr511) Antibody detects endogenous levels of PLD2 only when phosphorylated at Tyr511
Immunogen Type	peptide
Immunogen Description	A synthesized peptide derived from human PLD2 around the phosphorylation site of Tyr511
Target Name	PLD2
Other Names	Choline phosphatase 2; EC 3.1.4.4; hPLD 2; hPLD2; mPLD2; Phosphatidylcholine hydrolyzing phospholipase D2; Phosphatidylcholine-hydrolyzing phospholipase D2; Phospholipase D2; PhospholipaseD2; PLD 2; PLD1C; Pld2; PLD2_HUMAN; Pldc; rPLD2;
Accession No.	Swiss-Prot#:O14939NCBI Gene ID:5338
Uniprot	O14939
GeneID	5338;
Calculated MW	106
Concentration	1mg/ml
Formulation	Rabbit IgG in phosphate buffered saline , pH 7.4, 150mM NaCl, 0.02% sodium azide and 50% glycerol.
Storage	Store at -20 °C.Stable for 12 months from date of receipt

Application Details

WB: 1:500-1:2000

Images



Western blot analysis of Phospho-PLD2 (Tyr511) in lysates of Jurkat TNF 20ng/ml 30', using Phospho-PLD2 (Tyr511) Antibody(12968).

Note: This product is for in vitro research use only