

## LAT (Phospho-Tyr45) Antibody

Catalog No: #12988

Package Size: #12988-1 50ul #12988-2 100ul

Orders: [order@signalwayantibody.com](mailto:order@signalwayantibody.com)Support: [tech@signalwayantibody.com](mailto:tech@signalwayantibody.com)

## Description

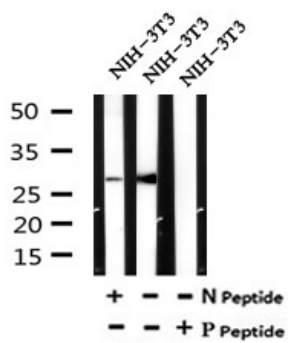
Product Name	LAT (Phospho-Tyr45) Antibody
Host Species	Rabbit
Clonality	Polyclonal
Purification	The antibody is from purified rabbit serum by affinity purification via sequential chromatography on phospho- and non-phospho-peptide affinity columns.
Applications	WB
Species Reactivity	Hu, Ms, Rt
Specificity	Phospho-LAT (Phospho-Tyr45) Antibody detects endogenous levels of LAT only when phosphorylated at Tyr45
Immunogen Type	peptide
Immunogen Description	A synthesized peptide derived from human LAT around the phosphorylation site of Tyr45
Target Name	LAT
Other Names	36 kDa phospho tyrosine adapter protein; 36 kDa phospho-tyrosine adapter protein; 36 kDa phospho-tyrosine adaptor protein; LAT 1; lat; LAT_HUMAN; LAT1; Linker for activation of T cells; Linker for activation of T cells family member 1; linker for activation of T cells, transmembrane adaptor; Linker for activation of T-cells family member 1; p36 38; p36-38; pp36;
Accession No.	Swiss-Prot#:O43561NCBI Gene ID:27040
Uniprot	O43561
GeneID	27040;
Calculated MW	28
Concentration	1mg/ml
Formulation	Rabbit IgG in phosphate buffered saline , pH 7.4, 150mM NaCl, 0.02% sodium azide and 50% glycerol.
Storage	Store at -20 °C.Stable for 12 months from date of receipt

## Application Details

WB: 1:500-1:2000

## Images

Western blot analysis of Phospho-LAT (Tyr45) in lysates of NIH-3T3, using Phospho-LAT (Tyr45) Antibody(12988).



Note: This product is for in vitro research use only