

## Rb (Phospho-Thr826) Antibody

Catalog No: #13057

Package Size: #13057-1 50ul #13057-2 100ul

Orders: [order@signalwayantibody.com](mailto:order@signalwayantibody.com)Support: [tech@signalwayantibody.com](mailto:tech@signalwayantibody.com)

## Description

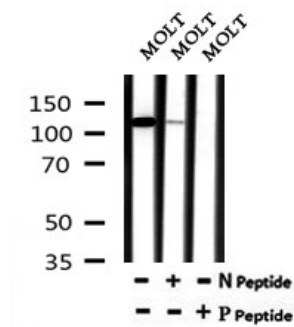
Product Name	Rb (Phospho-Thr826) Antibody
Host Species	Rabbit
Clonality	Polyclonal
Purification	The antibody is from purified rabbit serum by affinity purification via sequential chromatography on phospho- and non-phospho-peptide affinity columns.
Applications	WB
Species Reactivity	Hu, Ms, Rt
Specificity	Phospho-Rb (Phospho-Thr826) Antibody detects endogenous levels of Rb only when phosphorylated at Thr826
Immunogen Type	peptide
Immunogen Description	A synthesized peptide derived from human Rb around the phosphorylation site of Thr826
Target Name	Rb
Other Names	Exon 17 tumor GOS561 substitution mutation causes premature stop; GOS563 exon 17 substitution mutation causes premature stop; OSRC; Osteosarcoma; p105-Rb; P105RB; PP105; pp110; PPP1R130; pRb; Prepro retinoblastoma associated protein; Protein phosphatase 1 regulatory subunit 130; Rb; RB transcriptional corepressor 1; RB_HUMAN; RB1; RB1 gene; Retinoblastoma 1; Retinoblastoma susceptibility protein; Retinoblastoma-associated protein;
Accession No.	Swiss-Prot#:P06400NCBI Gene ID:5925
Uniprot	P06400
GeneID	5925;
Calculated MW	110
Concentration	1mg/ml
Formulation	Rabbit IgG in phosphate buffered saline , pH 7.4, 150mM NaCl, 0.02% sodium azide and 50% glycerol.
Storage	Store at -20 °C.Stable for 12 months from date of receipt

## Application Details

WB: 1:500-1:2000

## Images

Western blot analysis of Phospho-Rb (Thr826) in lysates of MOLT, using Phospho-Rb (Thr826) Antibody(13057).



Note: This product is for in vitro research use only