

Progesterone Receptor (Phospho-Ser79+Ser81) Antibody

Catalog No: #13058

Orders: order@signalwayantibody.com

Package Size: #13058-1 50ul #13058-2 100ul

Support: tech@signalwayantibody.com

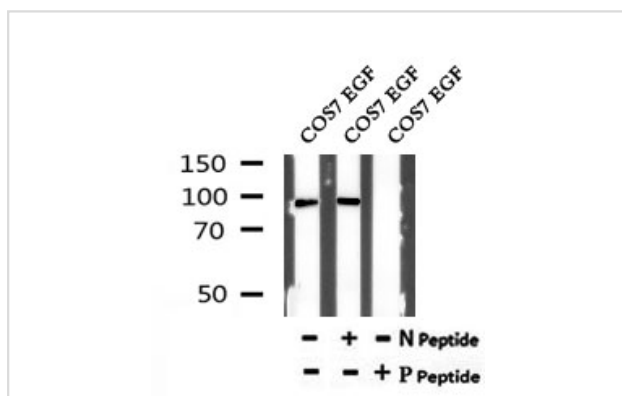
Description

Product Name	Progesterone Receptor (Phospho-Ser79+Ser81) Antibody
Host Species	Rabbit
Clonality	Polyclonal
Purification	The antibody is from purified rabbit serum by affinity purification via sequential chromatography on phospho- and non-phospho-peptide affinity columns.
Applications	WB
Species Reactivity	Hu
Specificity	Phospho-Progesterone Receptor (Phospho-Ser79+Ser81) Antibody detects endogenous levels of Progesterone Receptor only when phosphorylated at Ser79+Ser81
Immunogen Type	peptide
Immunogen Description	A synthesized peptide derived from human Progesterone Receptor around the phosphorylation site of Ser79+Ser81
Target Name	Progesterone Receptor
Other Names	NR3C3; Nuclear receptor subfamily 3 group C member 3; PGR; PR; PRA; PRB; PRGR_HUMAN; Progesterone receptor; Progesterin receptor form A; Progesterin receptor form B;
Accession No.	Swiss-Prot#:P06401NCBI Gene ID:5241
Calculated MW	99
Concentration	1mg/ml
Formulation	Rabbit IgG in phosphate buffered saline , pH 7.4, 150mM NaCl, 0.02% sodium azide and 50% glycerol.
Storage	Store at -20 °C.Stable for 12 months from date of receipt

Application Details

WB: 1:500-1:2000

Images



Western blot analysis of Phospho-Progesterone Receptor (Ser79+Ser81) in lysates of COS7 EGF, using Phospho-Progesterone Receptor (Ser79+Ser81) Antibody (13058).

Note: This product is for in vitro research use only and is not intended for use in humans or animals.