

## NPM (Phospho-Ser10) Antibody

Catalog No: #13062



Package Size: #13062-1 50ul #13062-2 100ul

Orders: order@signalwayantibody.com

Support: tech@signalwayantibody.com

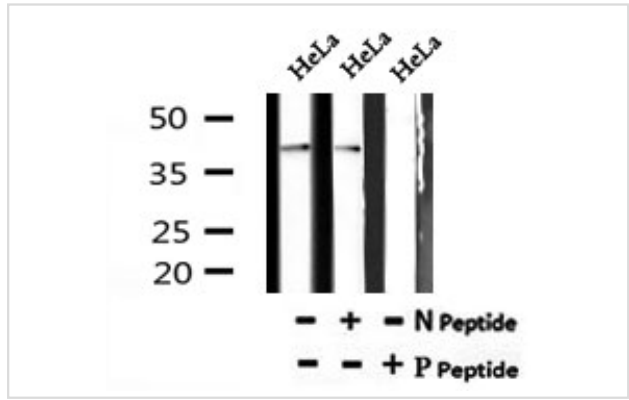
## Description

Product Name	NPM (Phospho-Ser10) Antibody
Host Species	Rabbit
Clonality	Polyclonal
Purification	The antibody is from purified rabbit serum by affinity purification via sequential chromatography on phospho- and non-phospho-peptide affinity columns.
Applications	WB
Species Reactivity	Hu, Ms, Rt
Specificity	Phospho-NPM (Phospho-Ser10) Antibody detects endogenous levels of NPM only when phosphorylated at Ser10
Immunogen Type	peptide
Immunogen Description	A synthesized peptide derived from human NPM around the phosphorylation site of Ser10
Target Name	NPM
Other Names	B23; MGC104254; NO38; NPM; NPM_HUMAN; NPM1; Nucleolar phosphoprotein B23; Nucleolar protein NO38; Nucleophosmin (nucleolar phosphoprotein B23 numatrin); Nucleophosmin; nucleophosmin nucleoplasmin family member 1; Nucleophosmin/nucleoplasmin family member 1; Numatrin; OTTHUMP00000161024; OTTHUMP00000161025; OTTHUMP00000223397; OTTHUMP00000223398;
Accession No.	Swiss-Prot#:P06748NCBI Gene ID:4869
Uniprot	P06748
GeneID	4869;
Calculated MW	37
Concentration	1mg/ml
Formulation	Rabbit IgG in phosphate buffered saline , pH 7.4, 150mM NaCl, 0.02% sodium azide and 50% glycerol.
Storage	Store at -20 °C.Stable for 12 months from date of receipt

## Application Details

WB: 1:500-1:2000

## Images



Western blot analysis of Phospho-NPM (Ser10) in lysates of HeLa?, using Phospho-NPM (Ser10) Antibody(13062).

Note: This product is for in vitro research use only