

Adrenergic Receptor beta2 (Phospho-Thr68) Antibody

Catalog No: #13064

Package Size: #13064-1 50ul #13064-2 100ul

Orders: order@signalwayantibody.comSupport: tech@signalwayantibody.com

Description

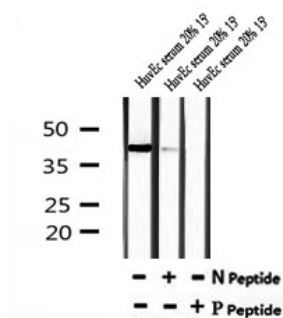
Product Name	Adrenergic Receptor beta2 (Phospho-Thr68) Antibody
Host Species	Rabbit
Clonality	Polyclonal
Purification	The antibody is from purified rabbit serum by affinity purification via sequential chromatography on phospho- and non-phospho-peptide affinity columns.
Applications	WB
Species Reactivity	Hu, Ms, Rt
Specificity	Phospho-Adrenergic Receptor beta2 (Phospho-Thr68) Antibody detects endogenous levels of Adrenergic Receptor beta2 only when phosphorylated at Thr68
Immunogen Type	peptide
Immunogen Description	A synthesized peptide derived from human Adrenergic Receptor beta2 around the phosphorylation site of Thr68
Target Name	Adrenergic Receptor beta2
Other Names	ADRB2; ADRB2_HUMAN; ADRB2R; ADRBR; Adrenergic beta 2 receptor surface; Adrenoceptor beta 2 surface; B2AR; BAR; beta 2 adrenoceptor; Beta 2 adrenoreceptor; Beta-2 adrenergic receptor; Beta-2 adrenoceptor; Beta-2 adrenoreceptor; BETA2AR; Catecholamine receptor; OTTHUMP00000160386;
Accession No.	Swiss-Prot#:P07550NCBI Gene ID:154
Uniprot	P07550
GeneID	154;
Calculated MW	40
Concentration	1mg/ml
Formulation	Rabbit IgG in phosphate buffered saline , pH 7.4, 150mM NaCl, 0.02% sodium azide and 50% glycerol.
Storage	Store at -20 °C.Stable for 12 months from date of receipt

Application Details

WB: 1:500-1:2000

Images

Western blot analysis of Phospho-Adrenergic Receptor beta2 (Thr68) in lysates of HuvEc serum 20% 15', using Phospho-Adrenergic Receptor beta2 (Thr68) Antibody(13064).



Note: This product is for in vitro research use only