

PRSS8 Antibody

Catalog No: #40367

Orders: order@signalwayantibody.comSupport: tech@signalwayantibody.com

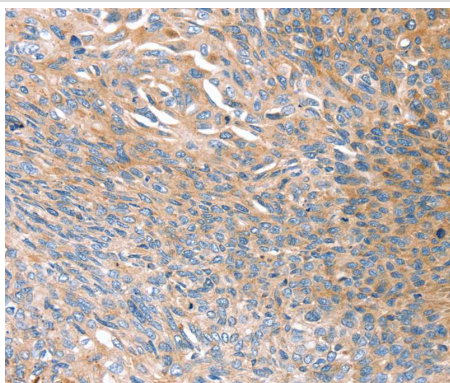
Description

Product Name	PRSS8 Antibody
Host Species	Rabbit
Clonality	Polyclonal
Purification	Antigen affinity purification.
Applications	IHC
Species Reactivity	Hu
Specificity	The antibody detects endogenous levels of total PRSS8 protein.
Immunogen Type	Peptide
Immunogen Description	Synthetic peptide corresponding to residues near the C terminal of human protease, serine, 8
Target Name	PRSS8
Other Names	CAP1; PROSTASIN
Accession No.	Swiss-Prot:Q16651Gene Accssion:NP_002764
Uniprot	Q16651
GeneID	5652;
Concentration	2.6mg/ml
Formulation	Rabbit IgG in pH7.4 PBS, 0.05% NaN ₃ , 40% Glycerol.
Storage	Store at -20°C

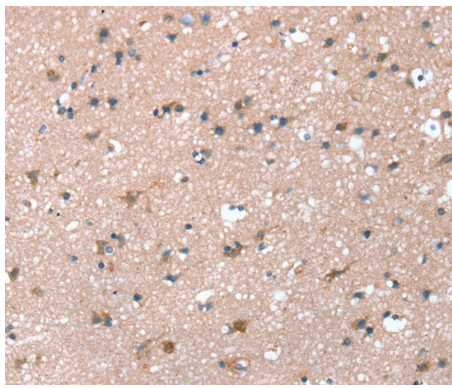
Application Details

Immunohistochemistry:1:25-1:100

Images



Immunohistochemical analysis of paraffin-embedded Human esophagus cancer tissue using #40367 at dilution 1/45.



Immunohistochemical analysis of paraffin-embedded Human brain tissue using #40367 at dilution 1/45.

Background

This gene encodes a trypsinogen, which is a member of the trypsin family of serine proteases. This enzyme is highly expressed in prostate epithelia and is one of several proteolytic enzymes found in seminal fluid. The proprotein is cleaved to produce a light chain and a heavy chain which are associated by a disulfide bond. It is active on peptide linkages involving the carboxyl group of lysine or arginine.?

Note: This product is for in vitro research use only