

SLC39A5 Antibody

Catalog No: #40370

Orders: order@signalwayantibody.comSupport: tech@signalwayantibody.com

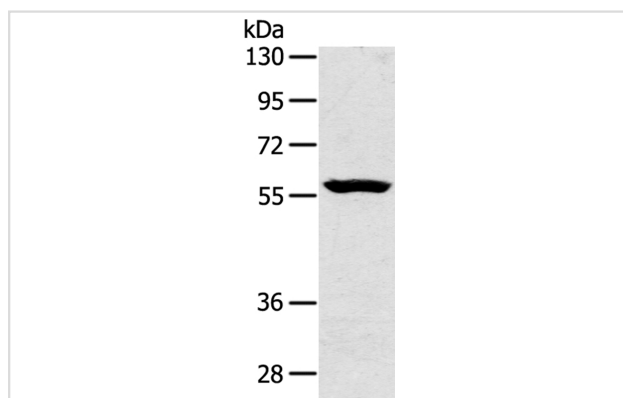
Description

Product Name	SLC39A5 Antibody
Host Species	Rabbit
Clonality	Polyclonal
Purification	Antigen affinity purification.
Applications	WB
Species Reactivity	Hu
Specificity	The antibody detects endogenous levels of total SLC39A5 protein.
Immunogen Type	Peptide
Immunogen Description	Synthetic peptide corresponding to a region derived from internal residues of human solute carrier family 39 (zinc transporter), member 5
Target Name	SLC39A5
Other Names	ZIP5; MYP24; LZT-Hs7
Accession No.	Swiss-Prot:Q6ZMH5Gene Accssion:NP_001128667
Uniprot	Q6ZMH5
GeneID	283375;
SDS-PAGE MW	56KD
Concentration	0.6mg/ml
Formulation	Rabbit IgG in pH7.4 PBS, 0.05% NaN ₃ , 40% Glycerol.
Storage	Store at -20°C

Application Details

Western blotting: 1:200-1:1000

Images



Gel: 6%SDS-PAGE
Lysate: 40ug Hepg2 cellPrimary antibody: 1/200 dilution
Secondary antibody dilution: 1/8000
Exposure time: 1 minute

Background

The protein encoded by this gene belongs to the ZIP family of zinc transporters that transport zinc into cells from outside, and play a crucial role in

controlling intracellular zinc levels. Zinc is an essential cofactor for many enzymes and proteins involved in gene transcription, growth, development and differentiation. Mutations in this gene have been associated with autosomal dominant high myopia (MYP24). Alternatively spliced transcript variants have been found for this gene.?

Note: This product is for in vitro research use only