

## EphA3 (Phospho-Tyr779) Antibody

Catalog No: #13137



Package Size: #13137-1 50ul #13137-2 100ul

Orders: order@signalwayantibody.com

Support: tech@signalwayantibody.com

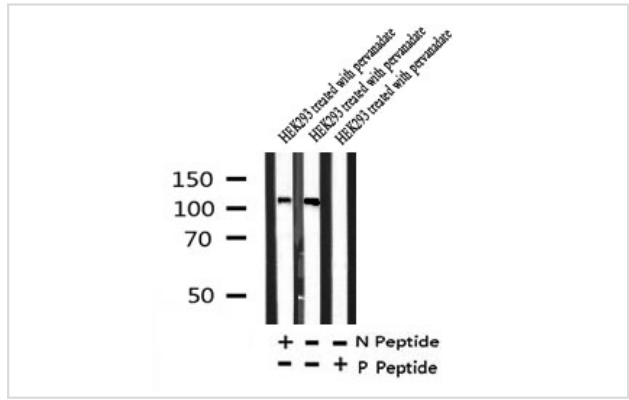
## Description

Product Name	EphA3 (Phospho-Tyr779) Antibody
Host Species	Rabbit
Clonality	Polyclonal
Purification	The antibody is from purified rabbit serum by affinity purification via sequential chromatography on phospho- and non-phospho-peptide affinity columns.
Applications	WB
Species Reactivity	Hu, Ms, Rt
Specificity	Phospho-EphA3 (Phospho-Tyr779) Antibody detects endogenous levels of EphA3 only when phosphorylated at Tyr779
Immunogen Type	peptide
Immunogen Description	A synthesized peptide derived from human EphA3 around the phosphorylation site of Tyr779
Target Name	EphA3
Other Names	AW492086; Cek4; EC 2.7.10.1; EK4; End3; Eph receptor A3; EPH-like kinase 4; EPH-like tyrosine kinase 1; EPHA3; EPHA3_HUMAN; Ephrin receptor EphA3; Ephrin type-A receptor 3; ETK 1; ETK; ETK1; HEK 4; HEK; HEK4; Human embryo kinase 1; Human embryo kinase; Mek4; MGC109882; Receptor tyrosine kinase HEK; Testicular tissue protein Li 64; Tyro 4; Tyro4; TYRO4 protein tyrosine kinase; Tyrosine protein kinase receptor ETK 1; Tyrosine-protein kinase receptor ETK1; Tyrosine-protein kinase TYRO4;
Accession No.	Swiss-Prot#:P29320NCBI Gene ID:2042
Uniprot	P29320
GeneID	2042;
Calculated MW	120
Concentration	1mg/ml
Formulation	Rabbit IgG in phosphate buffered saline , pH 7.4, 150mM NaCl, 0.02% sodium azide and 50% glycerol.
Storage	Store at -20 °C.Stable for 12 months from date of receipt

## Application Details

WB: 1:500-1:2000

## Images



Western blot analysis of Phospho-EphA3 (Tyr779) in lysates of HEK293 treated with pervanadate, using Phospho-EphA3 (Tyr779) Antibody(13137).

Note: This product is for in vitro research use only