

## SHP-1 (Phospho-Ser534) Antibody

Catalog No: #13138



Package Size: #13138-1 50ul #13138-2 100ul

Orders: [order@signalwayantibody.com](mailto:order@signalwayantibody.com)Support: [tech@signalwayantibody.com](mailto:tech@signalwayantibody.com)

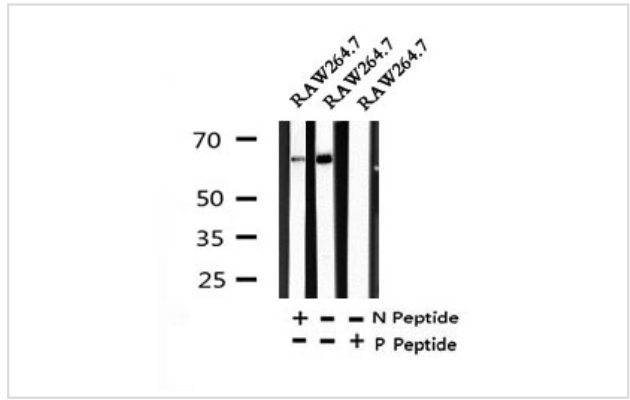
## Description

Product Name	SHP-1 (Phospho-Ser534) Antibody
Host Species	Rabbit
Clonality	Polyclonal
Purification	The antibody is from purified rabbit serum by affinity purification via sequential chromatography on phospho- and non-phospho-peptide affinity columns.
Applications	WB
Species Reactivity	Hu, Ms, Rt
Specificity	Phospho-SHP-1 (Phospho-Ser534) Antibody detects endogenous levels of SHP-1 only when phosphorylated at Ser534
Immunogen Type	peptide
Immunogen Description	A synthesized peptide derived from human SHP-1 around the phosphorylation site of Ser534
Target Name	SHP-1
Other Names	70Z-SHP; EC 3.1.3.48; HCP; HCPH; Hematopoietic cell phosphatase; Hematopoietic cell protein tyrosine phosphatase; Hematopoietic cell protein-tyrosine phosphatase; HPTP1C; Protein tyrosine phosphatase 1C; Protein tyrosine phosphatase non receptor type 6; Protein tyrosine phosphatase SHP1; Protein-tyrosine phosphatase 1C; protein-tyrosine phosphatase SHP 1; Protein-tyrosine phosphatase SHP-1; PTN6_HUMAN; PTP 1C; PTP-1C; PTP1C; Ptpn6; SH PTP 1; SH PTP1; SH-PTP1; SHP 1; SHP 1L; SHP1; SHP1L; tyrosine protein phosphatase non receptor type 6; Tyrosine-protein phosphatase non-receptor type 6;
Accession No.	Swiss-Prot#:P29350NCBI Gene ID:5777
Uniprot	P29350
GeneID	5777;
Calculated MW	67
Concentration	1mg/ml
Formulation	Rabbit IgG in phosphate buffered saline , pH 7.4, 150mM NaCl, 0.02% sodium azide and 50% glycerol.
Storage	Store at -20 °C.Stable for 12 months from date of receipt

## Application Details

WB: 1:500-1:2000

## Images



Western blot analysis of Phospho-SHP-1 (Ser534) in lysates of RAW264.7, using Phospho-SHP-1 (Ser534) Antibody(13138).

Note: This product is for in vitro research use only