

## MARCKS (Phospho-Ser27) Antibody

Catalog No: #13140



Package Size: #13140-1 50ul #13140-2 100ul

Orders: [order@signalwayantibody.com](mailto:order@signalwayantibody.com)Support: [tech@signalwayantibody.com](mailto:tech@signalwayantibody.com)

## Description

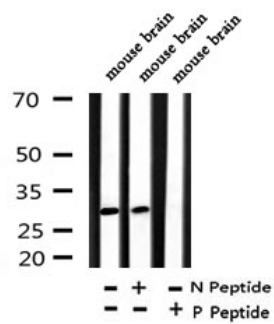
Product Name	MARCKS (Phospho-Ser27) Antibody
Host Species	Rabbit
Clonality	Polyclonal
Purification	The antibody is from purified rabbit serum by affinity purification via sequential chromatography on phospho- and non-phospho-peptide affinity columns.
Applications	WB
Species Reactivity	Hu, Ms, Rt
Specificity	Phospho-MARCKS (Phospho-Ser27) Antibody detects endogenous levels of MARCKS only when phosphorylated at Ser27
Immunogen Type	peptide
Immunogen Description	A synthesized peptide derived from human MARCKS around the phosphorylation site of Ser27
Target Name	MARCKS
Other Names	80 kDa protein; 80K L; 80K L protein; 80K-L protein; 80KL; 81 kDa protein, light chain; light chain; MACS; MARCKS; MARCS; MARCS_HUMAN; MGC52672; myristoylated alanine rich C kinase substrate; Myristoylated alanine rich protein kinase C substrate (MARCKS, 80K L); Myristoylated alanine rich protein kinase C substrate; Myristoylated alanine-rich C-kinase substrate; Phosphomyristin; PKCSL; PRKCSL; protein kinase C substrate 80 kDa protein light chain; Protein kinase C substrate;
Accession No.	Swiss-Prot#:P29966NCBI Gene ID:4082
Uniprot	P29966
GeneID	4082;
Calculated MW	31
Concentration	1mg/ml
Formulation	Rabbit IgG in phosphate buffered saline , pH 7.4, 150mM NaCl, 0.02% sodium azide and 50% glycerol.
Storage	Store at -20 °C.Stable for 12 months from date of receipt

## Application Details

WB: 1:500-1:2000

## Images

Western blot analysis of extracts of mouse brain tissue sample,using Phospho-MARCKS (Ser27) Antibody.(13140)



Note: This product is for in vitro research use only